

Specialist Groundcare Machinery Hire

10TH ANNIVERSARY EDITION



 Call our new hire hotlines for your area 

South East & Central
03330 069 545

South West
03301 659 599

LISTER  *WILDER*[®]

listerwilder.co.uk | join us     

Company Information

Established in 1947, Lister Wilder has six branches offering a wide range of specialist groundcare and arboricultural machinery across the south of England.

We are backed up by well established Parts and Service departments to make sure your machine is in perfect condition before you hire.

Benefits of Hire

- No capital outlay
- Wide range of professional machinery
- The latest machines from premier brands
- Access to different/multiple machines for different Jobs
- Return your machine when no longer required
- Build the hire cost into your quote for the job

Collection & Delivery

Collection can be made from dedicated hire hubs, or alternatively delivery to your premises or site can be arranged. Delivery charges will be quoted on request.

Seasonal machines may require advance bookings. Book early to avoid disappointment.

Long Term Hire

Long term hires are available - please contact us for pricing and details.

Health & Safety

At Lister Wilder we recognise our responsibilities under the Health & Safety at Work Act and have included icons to each item listed in this hire catalogue suggesting our recommendations of the safety clothing that should be worn whilst operating each piece of equipment.

PPE 7 Protective Clothing

We sell a wide range of PPE and protective clothing and safety equipment which are available across all of our eight branches. We recommend that you purchase any necessary protective equipment that is required to operate any machinery that you choose to hire.

Contents

Compact Tractors	3	Seeders	12
Medium Tractors	3	Implements & Other	13
Large Chassis Tractors	4	Chippers & Shredders	14
Loader Tractors	4	Heavy Duty Pedestrian Flail/Rotary Mowers	15
Utility Vehicles	5	Tractor Mounted Flails	15
Ride on Rotary Mowers	6	Leaf Collection	16
Flail Mowers	6	Side Arm Flails	16
Self Propelled Cylinder & Flail Mowers	7	Trailers	16
Trailed Rotary Mowers	8	Chemical Free Weed & Moss Removal	17
Scarifying & Core Collectors	8	Loaders	17
Heavy Duty Cut & Collect	9	Winter	17
Aeration	10	Remote Controlled Mower	18
Top Dressers	11	Specialist Groundcare Machinery Hire Terms & Conditions	18

Key



Safety Goggles



Safety Boots



Respiratory



Safety Helmet



Gloves



Ear Protection

Compact Tractors

LX-401

40HP compact tractor

Engine	40HP Direct injection, vertical, water-cooled, 4 cycle diesel
Rear PTO	SAE 1-3/8,6 splines
Transmission	Main hydrostatic, 3 ranges
Steering	Hydraulic power steering
Fuel tank	32 litre
Weight	1,1185kg



Medium Tractors

L2522

50HP compact tractor

Engine	50HP, 4-cylinder, TIER 4
PTO/engine speed	540/2,550rpm
Transmission	HST 3 ranges
Brake type	Wet discs
Steering	Hydrostatic power steering
Weight	2,045kg
Drive	4WD



L2622

61HP tractor with air conditioned cab

Engine	61HP, V2403 4-cyl. Kubota engine
Type	Direct injection, water-cooled
PTO/engine speed	540/2,400 rpm
Transmission	HST 3 ranges
Steering	Hydrostatic power steering
Weight	2,080kg
Drive	4WD



Large Chassis Tractors

M4073

74HP tractor with air conditioned cab

Engine	74HP, 3.3 litre, TIER 4
No. of cylinders	4
PTO	540/540eco
Transmission	Fully synchronized
Brake type	Hydraulic & electric
Fuel tank	90 litre capacity
Spools	2 spools



M5092

95HP tractor with air conditioned cab

Engine	95HP, 4-cylinder, V3800-TIER 4
PTO power	76HP (56.7kW)
Transmission	Fully synchronized
Brake type	Hydraulic wet discs
Steering	Hydrostatic power steering
Weight	3,420kg
Lift capacity	4,100kg



Loader Tractors

LX-401

40HP compact tractor

Engine	40HP Direct injection, vertical, water-cooled, 4 cycle diesel
Rear PTO	SAE 1-3/8, 6 splines
Transmission	Main hydrostatic, 3 ranges
Steering	Hydraulic power steering
Fuel tank	32 litre
Lift capacity	625kg



L2522

40HP compact tractor

Engine	40HP Direct injection, water-cooled, 4 cycle diesel
Rear PTO	SAE 1-3/8, 6 splines
Transmission	16 forward/reverse fully synchronised
Steering	Hydraulic power steering
Fuel tank	51 litre
Lift capacity	1,750kg



Loader Tractors

M4073

74HP loader tractor with air conditioned cab

Engine	74HP, 3.3 litre, 4-cylinder, TIER 4
PTO	540/540eco
Transmission	Fully synchronized
Brake type	Hydraulic & electric
Fuel tank	90 litre capacity



M5092

95HP loader tractor with air conditioned cab

Engine	95HP, V3800-TIER 4, 4-cylinder
PTO power	76HP (56.7kW)
Transmission	Fully synchronized
Brake type	Hydraulic wet discs
Loader	1,809kg lift to full height



Utility Vehicles

YAMAHA **UMX**

Utility vehicle

Motor	48 volt AC Motor
Batteries	Eight 6-volt Trojan T105 Batteries
Max speed	31 km/h
Cargo capacity	363kg



RTV-X1110

Utility vehicle

Engine	21.6HP diesel, 3-cylinder, 4 cycle
Transmission	Variable hydro transmission
Max speed	40km/h
Drive system	4WD/2WD selection



RTV-X1140

Utility vehicle

Engine	24.8HP diesel, 3-cylinder, 4 cycle
Transmission	Variable hydro transmission
Max speed	40km/h
Drive system	4WD/2WD selection



Ride on Rotary Mowers

G231-HD-48

Diesel ride on rotary mower with high dump collection

Engine	3-cylinder diesel, water cooled
Engine power	22HP
Transmission	Hydrostatic
Differential lock	Standard
Weight	955kg
Cutting width	122cm
Blade drive method	Gear drive
Lifting method	Hydraulic high dump
Capacity	640 litres



F391

High capacity output diesel out front rotary mower

Engine	4-cylinder diesel, liquid cooled
Horse power	37HP
Transmission	HST, (2 forward/2 reverse)
4WD mode	Dual-acting overrunning 4WD
Differential lock	Standard
Steering	Hydrostatic power
Weight	853kg without deck



ZD1211

Zero turn ride on rotary mower

Engine	Kubota 18.5kW diesel
Transmission	2 HST with integrated transaxle
Cutting width	152cm
Fuel tank	49 litres
Weight	790kg
No. of blades	3



Flail Mowers

FlailDek

F3890 with FlailDek

Width of cut	59"
Weight	220kg
Cutting height	0.5 - 4"
Weight	220kg



Flail Mowers

C1600CH

Heavy duty Low dump flail mower

Width of cut	1600mm
Hopper capacity	1.9m ³
Tractor requirements	55HP min
Weight	900kg

Available with or without tractor



Self Propelled Cylinder & Flail Mowers

F3

Triple flail mower

Engine	Yanmar 41HP turbo diesel, 1,500cc
Transmission	Automatic hydrostatic 4WD
Cutting width	215cm, variable from 77 to 215cm
Turning circle	1.80m
Weight	1,225kg excl. cabin



R3

Triple cylinder mower

Engine	Yanmar 41HP turbo diesel, 1500cc
Transmission	Automatic hydrostatic 4WD
Cutting width	213cm, variable from 75 to 213cm
Turning circle	1.80m
Weight	1.225kg excl. cabin



R5

Five gang cylinder mower

Engine	Yanmar 63HP turbo diesel
Capacity	47kW (66PK) at 2,600rpm
Cutting width	Variable from 75 - 345cm
Cutting height	15mm - 85mm
Cutting units	Hydraulically-powered units



F5

Five gang flail mower

Engine	Yanmar 63HP turbo diesel
Transmission	Automatic hydrostatic 4WD
Cutting width	Variable from 75 - 345cm
Cutting height	25mm - 85mm
Mowing units	Independently hydraulic driven units



Trailed Rotary Mowers

trimax **Pegasus P4 493**

Fixed deck roller mower

Cutting width	4.93m
Cutting height range	10 - 102mm
Power required	60HP

Available with or without tractor



trimax **Snake**

Fixed deck roller mower

Cutting width	3.2m
Cutting height range	10 - 102mm
Power required	50HP

Available with or without tractor



Scarifying & Core Collectors

sisis **Rotorake 600HD**

Pedestrian scarifier

Engine	Honda GX390
Working width	600mm
Working depth	30mm with options to go deeper

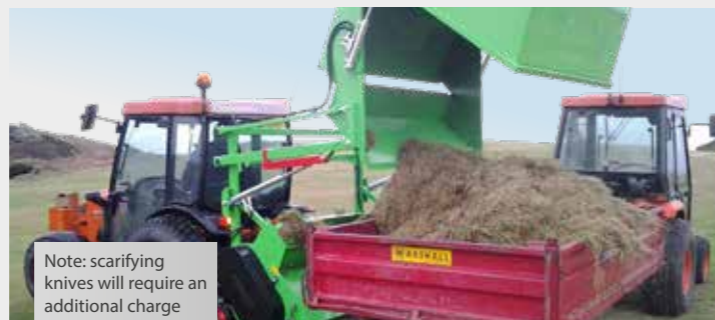


RYETEC **P1600**

Professional flail mower

Width of cut/no. of flails	1.6m/48"
Capacity	1.3m ³
Height of cut	0 - 150mm

Available with scarifying knives



Note: scarifying knives will require an additional charge



Kubota **FC4-501**

High capacity cut and collect flail/scarifying mower

Engine	Kubota 4-cylinder 2434cc Stage V
Transmission	4WD HST
Max. Power	50hp
Mower deck	59" rotary; 61" flail



Scarifying & Core Collectors

Redexim **1200 SP**

Pedestrian core collector

Engine	13HP
Working width	48" (1,200mm)
Tipping height	150" (250mm)
Hopper capacity	11ft ³ (0.3m ³)



BARONESS **FS900**

Ride on core collector

Engine	Vanguard 13.2Kw/3,600rpm
Weight	757kg
Working width	81cm
Bucket capacity	420 litres
Height of bucket	160cm



Redexim **Verti-Cut 1600**

Large area scarifier

Working width	1.6m
Working depth	50mm
Working speed	4mph
Weight	395kg
Tractor HP required	Minimum 43HP



Heavy Duty Cut & Collect

TRILO **S3 & S4**

Vacuum sweeper

S3	S4
700mm fan diameter	850mm fan diameter
> 28HP PTO output	> 80HP PTO output
3m ³ loading capacity	4m ³ loading capacity
1.5m working width	1.8/2.1/2.4m working width
280m ³ /min air capacity	315m ³ /min air capacity

Limited availability, book early to avoid disappointment



Aeration

Redexim OxyShot

Air Injection Unit

Weight	103kg
Injection pressure	25 - 110psi
Weight	165kg
Probes	Standard 25mm (depth 500mm) Optional 14mm (depth 250mm)



TORO ProCore 648

Carrier with vertical tine aerator

Engine	23HP Kohler® petrol
Working width	1,220mm
Working depth	Up to 102mm
Dimensions	1,667mm L x 1,321mm W
Weight	689kg
Speed	0.77 to 1.51mph



Verti-Drain 7215

Vertical tine aerator

Working width	1.56m
Tractor required	Suitable 25HP+
Maximum working depth	10"

Available with or without tractor plus also available with solid or coring tines*



Verti-Drain 7416

Vertical tine aerator

Working width	1.6m
Tractor required	Suitable 50HP+
Maximum working depth	14"

Available with or without tractor plus also available with solid or coring tines*



Verti-Drain 2519

Vertical tine aerator

Working width	1.95m
Tractor required	Suitable 55HP+
Maximum working depth	10"

Available with or without tractor plus also available with solid or coring tines*



* Coring tines will be at additional cost

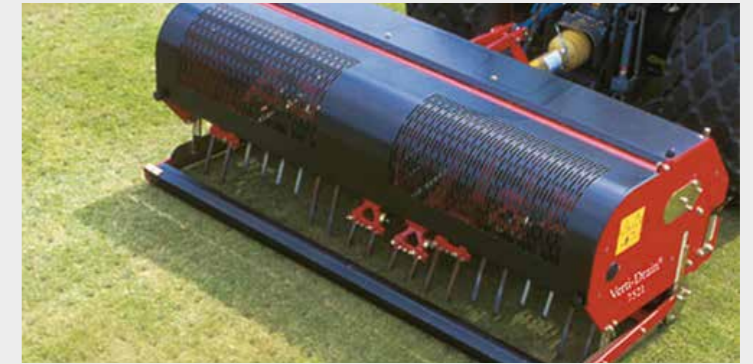
Aeration

Verti-Drain 7521

Vertical tine aerator

Working width	2.1m
Tractor required	Suitable 55HP+
Maximum working depth	16"

Available with or without tractor plus also available with solid or coring tines*



Redexim Verti-Quake

Decompactor

Working width	1.6m
Number of blades	18
Tractor requirements	30-45HP
Working depth	250mm

Available with or without tractor



Top Dressers

Redexim Rink DS 800

Wide-spread topdresser with electronic controls

Spreading width	Up to 36' (12m)
Hopper capacity	0.65m ³ (level) 0.76m ³ (heaped)
Tractor requirements	20HP min
Measurements	2.4m L x 1.45m W x 1.05m H
Weight	475kg
Working speed	16mph

Available with or without tractor



Redexim Rink DS 1200

Wide-spread topdresser with electronic controls

Spreading width	2 - 12m (6 1/2 - 40ft) variable
Spreading thickness	05 - 15mm
Hopper capacity	1.2m ³
Tractor requirements	25HP min
Weight	490kg
Working speed	16mph

Available with or without tractor



Top Dressers

Redexim Rink DS 3100

Wide-spread topdresser with electronic controls

Spreading width	Up to 36' (12m)
Hopper capacity	3.1m ³
Tractor requirements	45HP min
Weight	1,300kg
Working speed	16mph



Seeders

Redexim 1275 Overseeder

Compact disc seeder

Weight	676kg
Spacing	75mm
Hopper capacity	168 litres
Working width	1.2m



Redexim 1500 Speedseed

Seeder

Working width	1.5m
Hopper capacity	224 litres
Working depth	5 - 20mm
Tractor required	35HP



Redexim 1575 Overseeder

Compact disc seeder

Weight	1,178kg
Spacing	75mm
Working width	1.5m
Seed box cap	8.8ft ³ (0.25m ³)



Vredo 216

Super compact series double disc system seeder

Working width	1.60m
Hopper capacity	36 litres
Weight	1,130kg
Disc spacing	35mm



Seeders

Redexim Speed-brush

A towable grooming machine

Working width	56" (140cm)
Total width	70" (178cm)
Weight	400lbs (181kg)
Vehicle requirement	10HP, 12V + electric connection

Available with or without tractor



Implements & Other

imants Root Pruner

A towable grooming machine

Working width	0.60m
Working depth	250mm
Weight	415kg
Tractor requirement	540 PTO. Creep gear/hydraulic
Number of blades	6
Blade spacing	270mm

Available with or without tractor



BLEC BV 145

Stone burier

Working width	1.5m
Screening tines gap	14 - 50mm
Blades	54
Weight	652kg
Number of blades	54
Power requirements	35 - 65HP

Available with or without tractor



BLEC Culti-Pack

Seeder

Working width	91cm
Hopper capacity	55 litres
Power required	Honda F720 power tiller
Seeding rates	3 - 50g per sq metre
Dimensions (W x L x H)	110 x 180 x 120cm 43 x 71 x 47inches



* All of the above machines are available with or without a tractor

Implements & Other

D. W. Tomlin CS Series

1.45m Rotavator

Working width	1.45m
Tractor requirement	30HP
Type	Rotary
Applications	Cultivation
Optional extras	Sliding headstock; rubber depth wheels; crumbler & packer rollers

Available with or without tractor



Chippers & Shredders

TIMBERWOLF TW230VTR

45HP turbo diesel engine, a heavyweight chipping rotor, large feed rollers and over sized feed funnel - on tracks for excellent off road performance

Engine	45HP turbo Kubota 4-cylinder
Fuel	Diesel
Tank capacity	36 litres
Max dia. infeed	210mm (8.26")
Throughput	Up to 6.5 tonnes per hour
Feed method	Twin series hydraulic motors
Blades	2 x 127mm double sided blades, fully hardened



Chippers & Shredders

TIMBERWOLF TW230DHB

35HP 4-cylinder Kubota diesel engine, braked road chassis or tracks

Engine	35HP Kubota 4-cylinder
Fuel	Diesel
Length	3285mm (tray up) 3810mm (tray down)
Weight	749kg
Max dia. infeed	160mm (6.3")
Throughput	Up to 6.5 tonnes per hour
Feed method	Twin hyd rollers c/w auto feed control
Blades	135 x 100mm double sided blades fully hardened
Width/Height	1530mm/2225mm



Heavy Duty Pedestrian Flail/Rotary Mowers

SCAG SWZT 48" Flail

Walk behind heavy duty pedestrian flail mower

Engine	15HP Kawasaki recoil-start engine
Cutting height	36" or 48"
Dimensions	75.5" L, 36.25/41.5" for 48" model W



SCAG SWZ 48" Rotary

Walk behind heavy duty pedestrian rotary mower

Engine	14HP Kawasaki air-cooled engine
Cutting height	36"
Dimensions	75" L, 47" W (including chute)



TIMBERWOLF TW280HB(P)

57HP 4-cylinder Kubota petrol engine, braked road chassis

Engine	57HP Kubota 4-cylinder
Fuel	Petrol
Length	3330mm (tray up) 3860mm (tray down)
Weight	1193kg
Max dia. infeed	210mm (8.2")
Throughput	Up to 6.5 tonnes per hour
Feed method	Twin hyd rollers c/w auto feed control
Blades	2 x 158mm double sided blades, fully hardened
Width/Height	1640mm/2370mm



Tractor Mounted Flails

trimax MOWING SYSTEMS Warlord 175 & 205

1.7m & 2m flail mower

	175	205
175cm working width		200cm working width
55HP min PTO output		65HP min PTO output
204cm overall width		234cm overall width
674kg		753kg
24 flails per mower		28 flails per mower
0 - 75mm cut height range		

Warlord 175/205 are available with or without tractor



Leaf Collection

TRILO S3 & S4

Vacuum sweeper

S3	S4
700mm fan diameter	850mm fan diameter
4 fan blades	4 fan blades
> 28HP PTO output	> 80HP PTO output
540rpm PTO	540/1,000rpm PTO
3m ³ loading capacity	4m ³ loading capacity
1.5m working width	1.8/2.1/2.4m working width
280m ³ /min air capacity	315m ³ /min air capacity

Limited availability, book early to avoid disappointment



Side Arm Flails

BOMFORD TURNER Robin

Compact side arm flail mowers

Reach with flail	3.4m
Cutting width	0.9m
Weight without flail head	464kg
Flail heads	MP44
Min. tractor	30-40HP

Available with or without tractor



BOMFORD TURNER Kestrel

Compact side arm flail mowers

Reach with flail	5.7m
Cutting width	1.2m
Weight without flail head	3,500kg
Flail heads	MP44
Min. tractor	60hp

Available with or without tractor



Trailers



We can supply a range of trailers for hire please call for details

Chemical Free Weed & Moss Removal



We have a wide range of Kersten machines for hire, from the small Weedo to the powerful UBS range and its array of attachments. Please call to discuss your specific requirements and we are sure we will have a machine to suit.



Weedo
For moss & weed removal



UBS & Weedbrush
Reclaiming path edges



UBS & Flail
With a 90cm cutting width



K Series & Rotary Brush
Clears astro turf, roads/paths & paving



Snow Clearing
82cm Quick-Attach sweeper

Loaders

AVANT 635

Front loaders

Weight	1360 + 170kg
Lift capacity	1100kg
Engine	26hp
Lift height	2.8m
Top speed	11km/h
Transmission	Hydrostatic Avant Optidrive™
Max torque	93 Nm @ 1700 rpm



AVANT 760i

Front loaders

Weight	2100kg
Lift capacity	1500kg
Engine	57hp diesel
Lift height	3.1m
Top speed	26km/h
Transmission	Hydrostatic Avant Optidrive™
Max torque	220 Nm @ 1500 rpm



Winter



We can supply a range of solutions to suit any application.

Remote Controlled Mower

Flailbot

Remote controlled mower

Engine Size	50hp
Flailbot with Oil and Fuel	1360kg
Working angle up to	55°
Remote Control Distance	150m



Specialist Groundcare Machinery Hire Terms & Conditions

Hire Terms & Conditions

- A Where specified, implements supplied without a tractor may require a different length PTO shaft (to be supplied at an extra cost)
- B Collection and delivery of machines is subject to a charge
- C It is the hirer's responsibility to insure against damage, loss, theft and public damage
- D Normal wear and tear of equipment is acceptable, but any damage will be charged in full
- E Equipment will be delivered in a clean and tidy condition. A cleaning charge will apply if the equipment is returned in unacceptable condition
- F No discount is given for unused time due to foul weather, poor ground conditions or public holidays
- G All oil and water levels (where applicable) must be checked on a daily basis. On grass cutting machines the grass screen to the radiator must be cleaned on an hourly basis
- H Where applicable, machines are supplied with a set of standard tines; any additional tines that are required will be chargeable
- I Payment is due within 7 days of the date of the invoice. Invoices will be issued after each 5-day hire period
- J (a) Should the hirer request an early termination during a pre-agreed fixed term or minimum term hire then 50% of the outstanding hire period will be chargeable as an "Early Termination" charge.
(b) Any previous discounts applied for fixed term or minimum term rates which wouldn't have been qualified for during the actual hire period will also be retrospectively charged, this will appear on the invoice as "Unqualified Discount Re-Charge".
- K On delivery the machine will be supplied with a full tank off white diesel, and should be returned with a full tank of white diesel. Upon collection the tank will be checked and if red diesel has been used the hirer will be charged for the cost of flushing the tank, changing the filter and re-filling with white diesel.

Additional Charges

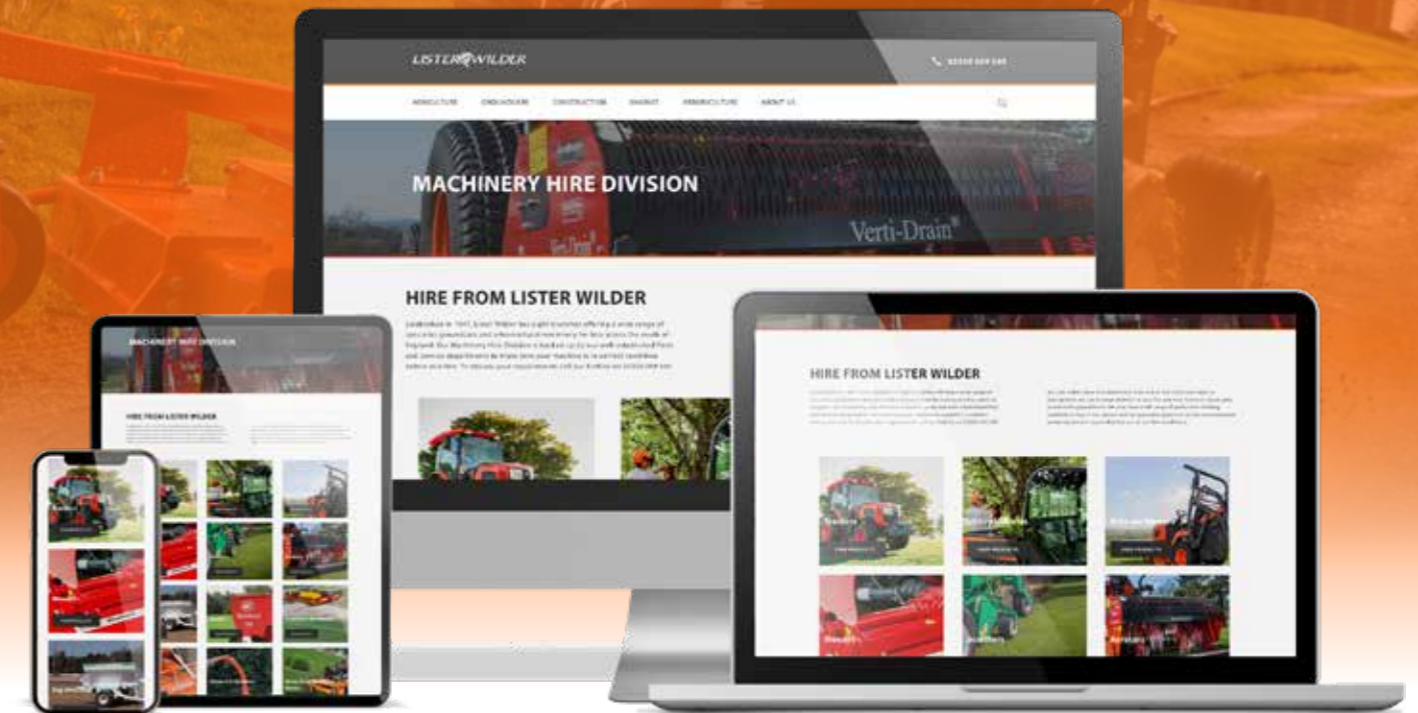
- Damage due to misuse or abuse
- Scarifying knives on applicable machines
- Additional tines, blades or scarifying knives if required
- Cleaning charges if the machine is returned in an unacceptable condition

Sale of Hire Machinery

We are often asked about selling our hire machinery, the answer is we will sell any machine at any time. If you are looking for a 6 month old tractor, a 1 year old chipper or a 4 year old Verti-Drain for example please contact your area sales representative who will be happy to give you a quotation.



Specialist Groundcare Machinery Hire



Our fleet of specialist machines are all in tip top condition...with the vast majority of machines less than three years old. Couple this with the delivery and collection service, and the onsite installation from fully trained operators, and you can be sure to get the very best from your Hire.



Visit our dedicated Specialist Groundcare Machinery Hire section
listerwilder.co.uk



LISTER WILDER

listerwilder.co.uk | join us     



Call our new hire hotlines for your area



Nick Alder & Kelly Breadmore

South East & Central
03330 069 545



Matt Hobbs

South West
03301 659 599

Or visit our dedicated Specialist
Groundcare Machinery Hire section
listerwilder.co.uk

See these machines
in action on our
YouTube channel!



Scan your smart
phone here to
be taken directly
to our channel.



LISTER WILDER