

WildLife

Groundcare
XIV Edition



In this issue

New Products
from Kubota

Special Offers on
M-Series Tractors

Introducing AVANT



LISTER WILDER

WELCOME TO OUR FIRST EDITION OF WILDLIFE FOR 2024!



In this edition you'll find some exciting new products from Kubota, Baroness and Merlo, along with new product ranges to Lister Wilder such as Avant and Stella. We've also packed it with customer stories from around the group, and special offers on both new, used and ex-hire machinery.

Since our last Wildlife we have significantly increased our hire fleet offering, an example of which can be found inside. In order to manage the demand that we are seeing for hired in equipment we now offer this service from our Bristol branch in Keynsham in addition to Reading, proving local support across the South.

Our aftersales departments have been busy over the recent months providing winter servicing to machinery from the six branches, if you haven't booked your machine in for a check-over yet please contact one of our Service Managers to take advantage of the current special offers.

For many of our customers last year proved a challenge with the heavy rainfall that the UK experienced, and we really hope that this year is kinder. Our Sales team have a new fleet of demonstration machinery available which they will be eager to show you as soon as the weather improves, but if there is anything that you would like to see please ensure that you book it in now so that we can accommodate your dates.

We hope you enjoy the read, and look forward to being of service throughout 2024.

Phill Hughes
Sales Director

6 KUBOTA FC RANGE	10 HIGH 5 LEASE PACKAGES	13 CYLINDER GRINDING OFFERS
14 NEW BARONESS FS900	26 TIMBERWOLF CHIPPER OFFERS	26 CHAIN & BLADE SHARPENING OFFERS
28 AVANT FINANCING	34 SALSCO ELECTRIC GREENS ROLLERS	38 INTRODUCING STELLA
40 RENOVATION HIRE OFFERS	46 YAMAHA BUGGIES	50 SCAG EVZ OVERVIEW
52 MERLO EWORKER	54 MERLO CINGO FINANCE OFFER	56 HUSQVARNA CEORA
60 KUBOTA FINANCING	62 AFTERSALES OFFERS	70 STOCK OFFERS

Kubota flexibility key for campus life

Take a wander around the diverse grounds of the University of Surrey and the chances are you will regularly spot the familiar orange Kubota livery at work cutting grass on sports pitches or moving staff and machinery between a huge range of tasks. In winter, you might even see Kubotas clearing snow and ice or delivering the lighting rigs that enable elite sportsmen and women to practice in the darker months.



**POWER ON!
WITH KUBOTA
LUBRICANTS.**



KUBOTA GREASE EP2

A multi-purpose grease formulated for the lubrication of plain bearings, ball bearings, roller bearings, hub bearings, universal joints and chassis of all KUBOTA machines operating in dusty, humid or dry environments.

KUBOTA GREASE EP2 has excellent mechanical stability as well as good adhesion to metals, allowing long working life without loss of product. Lube-Shuttle cartridge.

CONTACT YOUR LOCAL BRANCH FOR MORE DETAILS

The brand is one that has stood the test of time across the 119 ha of the university's three campuses and research park around Guildford. Sports and Landscape Manager Iain Main recalls working with Kubota machines when he joined as an apprentice groundsman 38 years ago, and they are as fundamental as ever in his current role.

The most recent Kubota acquisitions from Area Sales Manager Mark Carter at Lister Wilder's nearby Ockham branch include two F391 out-front mowers and two X1110 RTVs. As with other equipment, they have been leased with a view to buying them when the leases expire.

However, the decisions on which brand is the right one for any piece of equipment don't rest with Iain alone. "Our operators are involved in the whole process from the demonstrations right the way through to the decision to buy," he says. "What they think about things like ease-of-use and comfort make a big difference in our ultimate machinery choice."

He adds: "We have introduced a system that identifies a single operator and an emergency operator for each machine so that there is a bit of ownership that follows through into doing the basic maintenance on their own machines. That's why our equipment lasts a significant length of time - we have some machinery that was used here before I was born - we do look after it."

Around half of the grounds team of 16 are engaged in grass cutting which, at peak growing times of year, involves a two to three-day programme to cover



"We have been very happy with Kubota for a long time. It was one of the first machines I ever drove at 16, and the F391s have progressed the technology."

Sports and Landscape Manager Iain Main

the whole site. The diversity is such that some areas such as sports surfaces are mown 28 times a year, while precious habitat may be trimmed on just four occasions. The user audience stretches all the way from the likes of Woking FC and the Harlequins premiership rugby side through to those in the wider community who treasure the amenity habitat areas. It is reckoned that students make up less than 30% of the overall grounds users.

The F391s are the latest in a long line of out-front mowers to have been employed at the university, a fact that Iain puts down first and foremost to their reliability. "We have been very happy with Kubota for a long time," he says. "It was one of the first machines I ever drove at 16, and the F391s have progressed the technology."

"The quality of cut is very important to us given that we have to produce elite player surfaces, but they seem to be able to cope with all sorts of other needs and situations, including mowing on banks. They are also very flexible and we can even put snow ploughs on them in winter to keep the estate safe or flail mowers on the front for habitat areas. We also have a new blower which we use not just for leaves but for distribution of cut grass when we want neatness."

"The operators really value being able to take the mower decks on and off and setting the machine up quickly and easily. Dealing with the weather can be frustrating enough anyway so what they don't want to do is to spend too much time on that."

Meanwhile, the Kubota RTVs offer the university a similar level of versatility. "We stick trailers on the back of them and are able to get two operators, their equipment and their arisings from one location to another very comfortably," says Iain. "They seem to go just about anywhere - we have farmland we might need to cross and also community landscaping areas. We even use them to get into woodlands to do tree work - the four-wheel drive and diff lock make all that possible."

After 38 years in eight different positions within the university, Iain remains as enthusiastic as ever. "I have operated most of that equipment and I have a good relationship with those who operate it today," he says. "I love the diversity I get from the job and the pleasure it gives when you stand back at a major sports or graduation event and see how good it all looks."



NEW FOR 2024!

THE COMFORTABLE WORKHORSE



The FC4-501 is in its element covering very large areas ensuring high productivity and fine cutting with the 50hp engine. The robust large area Kubota FC3-261 offers high working comfort and cutting performance for mowing large lawns.

Highly productive work

The optimised workplace with a high level of operator and driving comfort leads to increased work productivity.

Centre collect with suction turbine

The centre collecting system via a turbine is very efficient and provide excellent collecting quality.

Excellent traction

The patented HTC™ hydrostatic traction control system ensures excellent traction in all conditions.

Convincing performance

The liquid-cooled, 3-cylinder diesel engine is fuel-efficient, has low-emission and is easy to maintain.

Highly productive mowing

Depending on the needs, there is a choice between powerful rotary decks and flail mower decks.

Voluminous grass collector

The high-discharge grass collector has a capacity of up to a whopping 1,300 litres.



Specification

Model	Engine	Max. Power	Transmission	Mower deck	Collecting System	Collector capacity
FC3-261	Kubota, 3-cylinder, 1123cc, Stage V	26hp	4WD HST with HTC	50" or 51" rotary 53" flail	Centre collect with suction turbine	800 litres
FC4-501	Kubota, 4-cylinder, 2434cc, Stage V	50hp	4WD HST	59" rotary 61" flail	Centre collect with suction turbine	1300 litres



St Monica Trust

St Monica Trust invests in Kubota



With its rapid acceleration and gripping traction, the RTV-X1110 can stop and resume climbing without the need for braking. Features that make it both comfortable and easy to use include deluxe split-bench seats, a digital easy-read instrument panel and under-seat storage. It also very importantly has full roll-over protection designed for easy access to its hydraulic cargo tipping bed.

At the St Monica Trust, the Kubotas even provide a snow clearance facility via an optional plough attachment, a vital tool to have on hand for a business that has to ensure safe access in all weathers for its staff and the residents they care for.

The other plus listed by Kirsty comes in the shape of Lister Wilder's Area Sales Manager, Ian Davies. "We have worked with Ian for years and really can't fault him and the advice he gives us," she says. "Likewise, the servicing support we get from Dell Holliday is excellent."

The Kubotas have an important role to play in maintaining the standards that have been achieved by the St Monica Trust over its 103-year existence. A not-for-profit organisation, the Trust employs more than 1,200 people dedicated to providing high-quality accommodation and care for older people, including residents funded by social services.



Kubota RTVs a vital aid to retirement villages

There are five dedicated members in the team that looks after the extensive grounds of the St Monica Trust's glorious Westbury Fields retirement village on the outskirts of Bristol. And then there's 'Keith', the Kubota RTV X1110 sourced from Lister Wilder.

The award of a pet name is an indication of the high regard in which the utility vehicle is held at Westbury Fields, which is one of five retirement villages run by the charity across Bristol, Bath and North Somerset. Similar appreciation is enjoyed by the two X1110s that support the crew in the grounds of the Trust's Cote Lane retirement village overlooking Durdham Down and the one at the Sandford Station at Sandford in North Somerset.

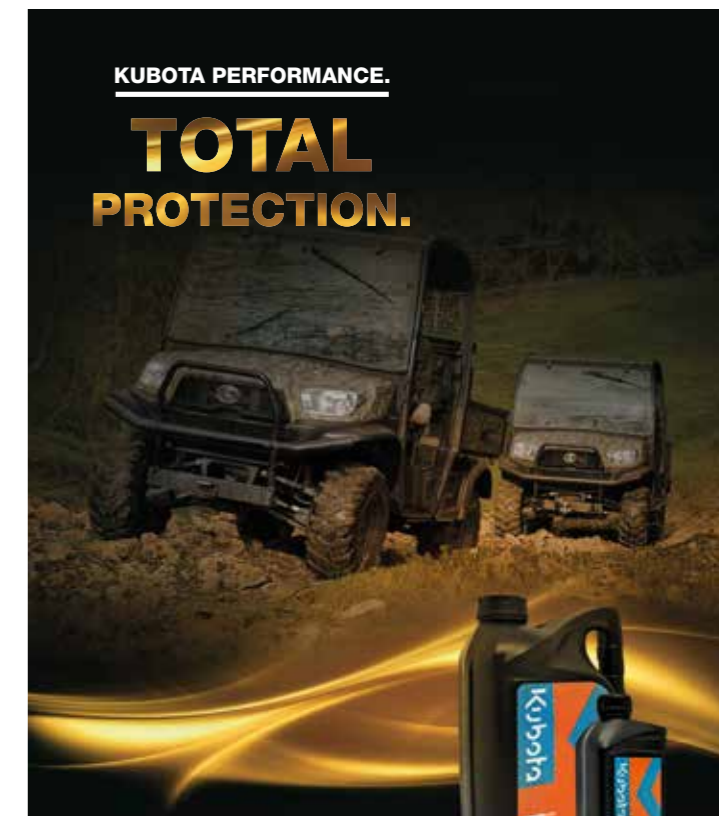
As the Trust's Gardens Manager Kirsty Frampton puts it: "They are all loved, and because they are loved they are looked after. To be honest, we would be lost without

them. The grounds are quite large and we need to get around and to move the materials and machinery we work with. There is so much we would not be able to do without the Kubotas - towing a trailer, water bowser or chipper to name but some."

The Trust first put its faith in utility vehicles as workhorses all of 20 years ago, but it was only four years ago that it switched to Kubotas. It did so after carefully evaluating two other major brands.

"We looked in particular at ease of use and at the suitability of each vehicle for our particular sites, which have some quite tight areas to get into," says Kirsty. "The Kubota stood out from the others because we felt it had an overall easier feel to it and a better ride. It was also easier to load and unload from a transport vehicle, and the cost was good."

The RTV-X1110 achieves its power and versatility from an economical 24.2hp Kubota 3-cylinder liquid cooled diesel engine coupled with a unique drive train arrangement that allows it to go where other utility vehicles can't. It also benefits from Kubota's innovative variable hydrostatic transmission and dynamic engine braking that makes it one of the safest utility vehicles on the market.



Kubota GENUINE OILS & LUBRICANTS

LISTER WILDER

"...the servicing support we get from Dell Holliday is excellent."

Gardens Manager Kirsty Frampton



The Specialised Operator Lease Packages from Lister Wilder

— For L & M series Kubota tractors for Golf & Sports Clubs —

5

- years warranty included**
- years servicing included**
- years fixed costs
- years peace of mind
- market leading tractors to choose!

Finance examples

Kubota M4073 74hp
1 + 59 monthly payments **£685.10***

Finance examples

Kubota L2522 40hp
1 + 59 monthly payments **£593.40***

All Prices Exclude VAT

Finance is restricted to business users only; available subject to status and credit acceptance, all applicants must be 18 or over. United Kingdom only. The finance product offered above is based on an operating lease with 1 advanced monthly payment due on signing followed by 59 monthly payments. A documentation fee of £100.00 will apply, payments are subject to VAT at the UK standard rate. At the end of the agreement, you will not own the asset. Images are for illustrative purposes only and specifications may vary. Alternative finance products and services are available. Terms and conditions apply. This promotion is offered and arranged by Buckingham Leasing Limited, authorised and regulated by the Financial Conduct Authority FRN: 671552, Company Registration No: 4637226. Buckingham Leasing are acting as a credit broker and not a lender and may receive payment from the finance provider if you decide to enter into an agreement, this will be disclosed if requested. Registered address: Waterfield House, Wellmore, Foscott Road, Maids Moreton, England, MK18 1QQ. This offer is valid until 31/05/2024 unless it is withdrawn earlier.



Singing Hills Golf Course invests in Baroness



Baroness - on-cut and ahead of the day's play

One of the great attractions at the Singing Hills Golf Course in Sussex is that you can take your pick from three loops of nine holes. Play just nine when time is tight or choose two nines from the Lake, Valley or River courses.

For the greenkeeping team, that sets some significant challenges at the start of each day as they work to stay ahead of play. It requires dedication - but from a practical point of view it also means investing in sufficient grass cutting machinery so that the crew can spread their time over what are effectively three courses.

Course Manager for the past six years, Mark Lunday also puts great faith in having the right machines for the job and is in no doubt that Baroness is the brand that delivers what he wants in terms of quality of finish in particular. Singing Hills has invested in two LM551 five-unit fairway mowers and a pair of three-unit LM 331 surrounds mowers for the collars, approaches and tees.



Course Manager Mark Lunday

“Baroness machines really are a fantastic piece of equipment . . . the best I have ever used in more than 30 years in the industry.”

“Baroness machines really are a fantastic piece of equipment,” he enthuses. “The best I have ever used in more than 30 years in the industry. They are a delight the way they stay on cut once you have them set up, and the quality of the finish is superb.”

“We had our previous brand for 15 years but the machines never gave us the same quality of cut. We looked at three brands this time and Baroness came out as the best all round - less complicated, more robust, more refined and better quality. We went with them and we have not been disappointed.”

He adds: “Our mechanic is happy because they are so good to maintain, and that’s because they are very straightforward where other brands build in far too much computer complexity. From an operator’s point of view, the Baronesses are very nice to operate - you have your rev counter, switches and not too much more to worry about.”

Mark is also full of praise for the after sales service that he gets from both Lister Wilder and Baroness. “Luke Collins (Baroness UK Area Sales Manager) comes in to see us and asks what we like and what we don’t like and then those issues get dealt with. They listen where others don’t bother, and they care about our opinions.”

The LM551 is available with 22 and 26-inch units along with optional accessories such as the groomers, which Mark particularly likes because the machines go out when dew is on the ground without leaving any clip.

The LM551’s mower units have an industry leading range of motion combined with unique tension support and down pressure features, allowing the machine to consistently and accurately follow the most undulating surfaces. They are equipped with Kubota V1505-CR-TE5 engines for solid reliability.

Meanwhile, the LM331 benefits from a simple design that allows it to hug the contours and undulations around the bunkers and surrounds. Mower arms are equipped with unique mechanisms that absorb the bouncing of the machine and maintain consistent down pressure.

It’s a recipe that is working well at Singing Hills, a parkland course opened in 1992 in beautiful surroundings at the foot of the South Downs. Today, it has developed into one of the best courses in the area, with lush fairways, maturing trees, large greens and tees. In addition to its 27-holes, it has a fine clubhouse and 14-bay floodlit and covered driving range.

Mark and his team of eight have progressively updated the course over recent years, working in particular on upgrading the drainage and rebuilding tees and paths. Plans for this year include a large lake to further boost the irrigation.

BARONESS
Quality on Demand

CYLINDER GRINDING SPECIAL OFFERS

EXPRESS DUAL 4000



CYLINDER GRINDER

ANGLEMASTER 4000



BOTTOM BLADE GRINDER

LISTER WILDER INVESTS IN NEW CYLINDER AND BOTTOM BLADE GRINDERS.

Lister Wilder have recently invested in new cylinder and bottom blade grinders at our Ockham and Bibury branches in time for our busy winter service program. Cylinder grinding is a large part of Lister Wilder’s business and our ever growing list of customers include many prestigious golf courses and national contractor’s.

FOR MORE INFORMATION ABOUT CYLINDER GRINDING (INCLUDING RELIEF GRINDING), BOTTOM BLADE AND CHIPPER BLADE GRINDING PLEASE CONTACT YOUR NEAREST SERVICE MANAGER:

Ashford
Jack Blood
01233 619 290

Bristol/Bath
Ken Weaver
01454 807 850

Bibury
Izzy Clare
01285 708 234

Guildford
Tracy Ewart
01483 286 837

Reading

Lisa Cresswell 01189 884 888

All prices exclude VAT, unless otherwise stated. Prices correct as from time of printing, terms and conditions apply, E&OE, contact your local branch for further details.

FS900

BARONESS
Quality on Demand

INTRODUCING THE ALL NEW BARONESS FS900

**A CORE SWEEPER AND
COLLECTOR WITH A SUPERB
COMPACT DESIGN THAT CAN
EASILY BE MANOEUVRED ON THE
TIGHTEST OF GREENS & TEES.**



AVAILABLE FOR
HIRE

- The Baroness FS900 is a light and very compact versatile machine, with superb manoeuvrability
- Ideal for Greens, tees, approach's, small fairways, tennis and croquet courts
- The FS900 collects not only cores but also grass clippings, leaves and sand
- The brush height can be adjusted easily whilst still sitting in the driver's seat, making it easy to adjust for different surfaces.
- Comes equipped with a hydraulic high-lift hopper for easy dumping of debris onto a trailer or utility vehicle. An alarm will also sound once the hopper is full and ready for unloading
- All these benefits make the Baroness FS900 core collector a very fast and efficient machine saving time and money when carrying out renovations in tight time frames



KEY FEATURES

LIGHTWEIGHT

A light and very compact versatile machine, with superb movability

ADJUSTABLE BRUSH HEIGHT

The brush height can be adjusted easily while sitting in the driver's seat, making it easy to adjust for different surfaces.



SPECIFICATION

Total length	256cm
Total width	177cm
Total height	149cm
Weight	757kg
Engine	Vanguard 13.2Kw/3,600rpm
Fuel tank	16L (petrol)
Speed	0 - 17km/h (10.5mph)
Working width	81cm
Bucket capacity	420 litres
Height of bucket	160cm
Efficiency per hour	5,200m ² per hour (@ 8Km per hour)



Wells Golf Club invests in Baroness



Top cut comes from Baroness

With a team of just three greenkeepers plus a trainee, Wells Golf Club in rural Somerset relies on having the right grass cutting machinery to make the best of the available man hours and keep the course at its superb best. When the time came for a new ride-on greens mower, Head Greenkeeper Mark Lewer invited three top brands to test for the job. The clear winner was the Baroness LM315.



“Lister Wilder and Baroness make an outstanding combination from advice through to service and repair.”

Course Manager Mark Lewer

“We tried two other big names but I very much favoured the Baroness as not just the best for performance but the best value by a distance,” says Mark. “We had it for four days and I made sure we all used it so that I could get feedback from the whole team. Everyone agreed that it had the best quality of cut and was the one we should go for.

“For me, it isn’t just that it achieves such a high quality of the cut but the fact that it holds onto it far better than any other greens mower on the market. The hardened bottom blades are a big selling point - you don’t have to re-grind as often. It’s also easier to set up and to maintain in general.”

Mark also scored the Baroness highly in terms of service and was particularly conscious of the proximity of Lister Wilder’s new branch at Keynsham on the outskirts of Bristol. He had also enjoyed a good relationship with the dealer during his 27 years at nearby Farrington Park Golf Club where he loved the Baroness rough mower.

“Lister Wilder and Baroness make an outstanding combination from advice through to service and repair,” he adds. “I know that if I need an engineer he will be here the same day if he humanly can and if not, it will be tomorrow. They always manage to fit us in. With other dealerships that are further away you can sometimes wait two weeks for a part.”

Founded in 1893, Wells is very much a traditional golf club that is owned and loved by its 600 members and takes pride in its warm atmosphere. The views from the upper reaches of the undulating parkland course are rated as amongst the best in the West Country with a panorama that takes in Britain’s smallest city of Wells along with its ancient cathedral.

The course itself offers a varied skills test. It runs at two levels, with holes 2 to 11 circling the hills and in doing so offering the best of the views. Hole 12 takes you back down from its elevated tee to a double green by the clubhouse. The remaining holes play along the valley, where accurate drives are essential.

The undulating course represents a perfect test for the Baroness LM315, doing a double job of mowing and de-thatching the greens. Quite apart from its renown quality of cut, it offers many variations to set the height of cut and blade angle, allowing the operator to quickly achieve the best match for the turf conditions. The reel is powered by Baroness’ original wire cable system that eliminates the risk of hydraulic oil leaking from the cutting unit onto the grass. The LM315 will also automatically switch to three-wheel drive for excellent climbing and turning performance to give the best cut in any location.

With the Baroness in the shed, Mark says the course is looking as good as it has ever looked and draws regular compliments from members. “I am truly delighted with what it is doing for us,” he says.



Introducing AgriMetal from Baroness

AgriMetal

Sales · Parts · Service

AGRIMETAL HAVE A RICH HERITAGE IN PRODUCING MARKET LEADING TECHNOLOGY FOR A WIDE RANGE OF USES. AGRIMETALS PRODUCTS ARE SOME OF THE MOST AFFORDABLE AND WELL-MADE MACHINES ON THE MARKET TODAY.



TURBINE BLOWER TB-270



ROLLERS



The AgriMetal TB-270 Turbine Blower is constructed with an Aluminium Cast Turbine Propeller, which is electronically balanced to provide years of trouble free service. The AgriMetal Turbine Blower is powered by an efficient 27hp fuel injected petrol engine. An industrial 12 volt throttle actuator is also used to provide years of maintenance free service.

REMOTE CONTROL

The weather resistant wireless remote system provides no-delay throttle and chute control at your fingertips.

ENCLOSED TURBINE AIR INTAKE

The enclosed Turbine air intake provides minimal intrusion of debris in the turbine chamber.

MUFFLER

The large muffler considerably reduces noise. The exhaust manifold is 1/8" larger in diameter compared to the competition. This improvement prevents the engine from overheating. The exhaust system is completely covered with a metal mesh for added safety.

STEEL FENDERS

The fenders are constructed of steel with exclusive impact resistant bumpers to re-enforce the overall structure.

90 DEGREE AIR NOZZLE

The 90 degree air chute is made of a composite material with an exclusive oblong shape outlet.

LARGE FUEL TANK

The 24L fuel tank allows you to get more done between fill ups.



The range available consists of the GR-400 & GR-660. The GR-400 model is the most affordable, high specification roller on the market with the GR-660 model providing an industry leading 66" width roll.

HYDRO-GEAR HYDROSTATIC PUMP

The Hydro-Gear hydrostatic pump has been mated with Honda's reliable 13hp engine ensuring maximum torque and efficiency. Each head is powered by its own hydraulic motor in series to distribute flow and torque evenly.

AUTOMATIC CHAIN TIGHTENER SYSTEM

Thanks to the automatic chain tightener system there is less time spent on adjustments, the chains are also located inside a closed box, helping prevent grass clipping, sand & any other debris getting into the drive mechanism.

EASY MAINTENANCE

Each floating head has openings on the top front & back, making clean up simple. The easier it is the more likely it will get done.

FLOATING STEERING HEAD

The roller's floating head design effortlessly follows the contours of the most severe undulations, providing a higher roll factor and a better putting surface with minimal compaction.

HYDRAULIC ASSISTED STEERING

The hydraulic assisted steering drive system make it easy for the operator to operate the roller, with the floating steering head providing the industries tightest turning radius. This unique design has built in guides to ensure minimal overlap with maximum productivity.

RAMP SELF LOCKING MECHANISM

The ramp self-locking mechanism provides safe transportation. Thanks to the ramp spring assisted hinge system. It's easy for the operator to lift it back up before driving to the next green.



Staying on top of the grass challenge

With 175 acres of glorious South Downs countryside to look after, the grounds team at Highfield and Brookham Schools has to be flexible to ever changing demands. Routines often need to change around school events, and that means the grass cutting frequency can sometimes be variable.



Blessed with sports fields, a nine-hole golf course and large ornamental gardens, the school's grass challenge is substantial. For Grounds Manager Jasper Marks, a five-unit Baroness GM2810 Baroness ride-on mower from Lister Wilder that swallows up the ground while also providing an exceptionally good quality of cut is a good investment.

Highfield and Brookham are independent pre-prep and prep schools for boys aged all the way from 2 to 13. It's site at Liphook is set in leafy countryside at the point where West Sussex, Surrey and Hampshire all meet. The estate's total land ownership of more than 500 acres also includes much forest, making good sense of a biomass energy system that provides around 85% of the school's heating and hot water needs.

While the grounds team may occasionally contribute fallen timber to the contractor-run system, its main focus is on ensuring that pupils can enjoy sport on fine surfaces while also enhancing and protecting the wider parkland environment.

"We need to be jacks of all trades and there is little that we as a team wouldn't turn our hands to," says Jasper, who is supported by two grounds staff, an apprentice gardener and part-time gardener.

With around 100 acres of sports turf to look after, that is a big commitment and is the reason for a large mower as a pivot. "We previously had a mower on a similar scale but it had come to the end of its life and what it had to offer wasn't enough for what we needed," Jasper explains.



“Mark [Carter] has always gone above and beyond for us - he is on the end of a phone when we need him.”

Grounds Manager Jasper Marks

"I did a lot research in the big ride-on mower industry and was initially drawn to Baroness by word of mouth recommendations. I heard that they had created a very good product at a highly competitive price so I included them in our demos. The outcome of that process was that I recognised that the Baroness could do everything the more familiar brands could but much more cost-effectively, allowing me to put much more into my machinery programme."

He added: "It really is such a brilliant mower in terms of the sheer quality of the cut - the blades themselves are incredible and my experience has been that they stay sharp almost three times longer than a normal mower blade. I liked the fact that the metals are much stronger and more reliable than on other machines because one of our main pitches is surrounded by a shingle path, so quite a lot of gravel finds its way onto the grass."

"When you get into the depths of the machine you have something that is simple and isn't just a mobile computer that you have no idea how to operate. It is very user-friendly and the day-to-day maintenance is easy and quick - the little grease points for the bearings are very accessible."

Jasper is also happy with the support he gets from Lister Wilder and from Area Sales Manager Mark Carter in particular. "Mark has always gone above and beyond for us - he is on the end of a phone when we need him and if he hasn't got an immediate answer to our questions he comes back very quickly."

The Baroness GM2810 was designed to deliver the sort of high work-rates needed by Highfield and Brookham. Its five independently mounted cutting decks stick tight to the contours and the cutting height can be adjusted in minutes. The rear cutting decks swing out for ease of service access. On-demand four-wheel drive and differential lock make it comfortable and safe to use on the most demanding slopes and turns.

Keeping the grass under control is the big challenge for the schools' grounds team, but with so many trees making up its glorious landscape, it does also have a good few leaves to worry about in the autumn. Lister Wilder also helped with that one, supplying a Trilo BL960 leaf blower to mechanise a big job. Hydraulically operated from a tractor PTO shaft, it is compact and light but enormously powerful.

Beautiful Bath Chooses a Pegasus

As one of the most beautiful and elegant of Britain's great cities, Bath quite naturally takes the care of its parks, gardens and open spaces very seriously. In the front line of that substantial effort is a Trimax Pegasus from Lister Wilder, chosen for the quality of its cut and all-round versatility.

With hundreds of acres of parks and open spaces, Bath is very much a city that 'breathes'. But it is also proud of its UNESCO World Heritage status, which was awarded in recognition of its contribution to the understanding of the Roman and Georgian era. Put that together, and Bath unsurprisingly attracts around six million tourists each year who, like the locals, expect it to look a bit special.

Amongst the city's biggest attractions is the glorious 57-acre Royal Victoria Park where, just a short stroll from the city centre, you can enjoy a picnic, visit botanical gardens, play tennis or mini golf, watch bands play and even ride a zip wire.

Close by stands one of Britain's most recognised architectural landmarks, the Royal Crescent, which is viewed across a perfect grass area. It too is kept up to scratch by the Bath and North East Somerset Council Parks and Green Spaces team using the Pegasus, which has over the past 20 years become the leader in wide area mowing.

As the team's Senior Supervisor, Colin Hall made a careful assessment of the options before settling for his third Pegasus. "We have tried using a five deck cylinder mower but in one of our larger areas it would take two days for one sports area," he says. "The Pegasus gives us a high work rate, a good cut and it follows the contours which, in a hilly city like Bath, is very important."

Amongst other outstanding Pegasus features is the fact that no daily maintenance is required following a 50% reduction in grease points. The roller bearing system in particular benefits from requiring no regular greasing. There is simplicity too in the fact that auto belt tensioning improves the drive to the spindles without requiring manual adjustments.

Meanwhile, the outrigger arms and side channel have been re-designed for increased impact protection, and the wheels are larger to better distribute the weight and reduce ground pressure. Full-width front and rear rollers follow the contours and provide excellent anti-scalp protection.

Colin particularly values the extra functionality that has had been added to the Trimax through an electronic Multi-Lift which gives the operator the flexibility to manoeuvre in tight spaces or around obstacles. While this facility allows either side deck to be lifted independently, there is also a QuikLIFT option that allows all decks to be lifted slightly off the ground for traversing paths, driveways and kerbs. Meanwhile, Transport Mode completely raises all three decks for road transport.

"Moving around the city in traffic is important," says Colin. "I always reckon that using it to mow is only half the job. Using it to move from site to site is the other half and its very important to us." "You get an experienced person on a Trimax and you can get a hell of a lot of work done. I wouldn't be without it."

For more details on this machine and to try it out for a demonstration - please contact your nearest area sales manager



"The Pegasus gives us a high work rate, a good cut and it follows the contours which, in a hilly city like Bath, is very important."

Senior Supervisor, Colin Hall

TRIMAX BLADE & BOLT KIT

LAZERBLADE
FLING TIP

TX-411-160-842

£8.70
+vat

NUT + BOLT
LAZERBLADE

TX-411-322-050

£5.80
+vat

GENUINE
QUALITY



Timberwolf TW 280HB HYBRID AN INDUSTRY FIRST

With an enviable heritage, Timberwolf recognises our responsibility and the need to move towards more sustainable solutions. Developed to meet a growing need in the industry, the TW 280HB HYBRID offers 62hp of peak power but with Kubota Super Mini Series engine levels of emissions - ideal for the most challenging of jobs.

Simple to maintain, the TW 280HB HYBRID wood chipper is ideal for companies and organisations who are committed to minimising their emissions and fuel usage whilst not compromising on performance.

1. Kubota Engine

Kubota D902-TE4 turbo diesel engine:
Selected for its pedigree and high RPM, this Super Mini Series engine provides outstanding applied torque.

2. Easy ownership built in

With Timberwolf quality built in, the supercapacitors and motor generator are maintenance free.

3. Infeed

210mm (8 1/4") Infeed: recognised as the preferred solution for large ground-care teams and arborists alike

Safety as standard:

- Tray switch to ensure infeed safe distance
- Anti-tamper control bar covers
- Infeed protective devices (top and side)
- Safety curtain
- Easily accessible isolation switches
- Improved prop stand

4. Supercapacitors

With unlimited cycle life and, in comparison to Li-ion batteries, supercapacitors are smaller. They store and release energy exceptionally quickly. SECH supercapacitors are recognised industry wide for their high reliability and performance.

Features

- Class leading peak engine power of 62hp (46.3kW)
- Kubota D902-TE4, 24.8hp (18.5kW), turbo diesel engine
- With swift recharging capability, supercapacitors provide additional energy when required
- Maintenance-free, 37.3hp (27.8kW) generator synchronous motor (GSM) and supercapacitors
- All electrical components rated to IP68
- Auto-back off function as standard

Benefits

- Processing throughput of over 7 tonnes/hr
- Emissions and fuel consumption at Kubota Super Mini Series engine levels¹
- Self-charging system: no external charging is required
- No diesel particulate filter (DPF) or Adblue TM requirement
- Less fuel quality sensitivity
- Patented exhaust gas cooler reduces exhaust temperatures by 150°C
- Enhanced operator diagnostics for easy troubleshooting

PLUS all the elements you would expect from the TW 280 range:

- EN13525 compliant
- 280mm x 210mm feed opening (210mm (8 1/4") cutting performance)
- 2x quick access double-sided reversible blades
- Quad force rollers for ultimate crushing power
- 285° adjustable discharge chute
- Refined, ergonomic hitch/unhitch experience with connection storage points
- Timberwolf reliability and simplicity built-in troubleshooting

¹ Based on Kubota's emissions and fuel consumption data (testing over a fixed test cycle under laboratory conditions)

POWER

Peakpower@3200rpm	62hp(46.3kW)
Max torque @ 2400rpm	172.2 Nm

DIESEL ENGINE

Kubota D902-TE4 Turbo Diesel	
Max power at 3200rpm	24.8hp (18.5kW)
Starting method	Electric
Fuel tank capacity	36 litres

GENERATOR SYNCHRONOUS MOTOR

Inmotion Generator Synchronous Motor (GSM)	
Peak power at 3200rpm	37.3hp(27.8kW)

DIMENSIONS

Weight	1270kg
Height	2304mm
Height with discharge tube removed	1612mm
Length (tray down)	3862mm
Length (tray up)	3332mm
Width	1653mm

CHIPPING FEATURES

Feed method	Twin series hydraulic quad force rollers
Auto back-off function	Included
Maximum diameter infeed	210mm (8 1/4")
Discharge tube	285° adjustable discharge
Blades	2 x 158mm quick access, double sided, fully hardened, reversible blades



5 YEARS
at
3.90%
flat rate

All Prices
Exclude
VAT

CHAIN & BLADE SHARPENING

Book your
machine
in today



TW 160PH Petrol

Petrol powered engine, hydraulic feed, (unbraked) road chassis

£268.88 Per month



TW 230HB Petrol

Petrol powered engine, hydraulic feed, braked road chassis

£338.58 Per month



TW 230HB Diesel

25hp Kubota diesel powered engine, hydraulic feed, braked road chassis

£388.38 Per month



TW 230VTR Petrol

37hp petrol engine with a variable width tracking system

£557.57 Per month



TW 230VTR Diesel

25hp Kubota diesel engine with a variable width tracking system

£617.32 Per month



Timberwolf 150 blades per pair

£30.00



Timberwolf 190/230 blades per pair

£60.00



Chainsaw chain sharpening 20" plus

£15.00



Chainsaw chain sharpening 12 - 19"

£11.00

Give your Service Team a call on:

Ashford
01233 619 290

Bibury
01285 708 234

Bristol/Bath
01454 807 850

Guildford
01483 286 837

Reading
01189 884 888

All Prices
Exclude
VAT

OFFER VALID UNTIL 30th April 2024

Machine	Net	VAT	Total	Deposit (VAT)	Balance Financed	1+59 Monthly	Flat Rate
Timberwolf TW230HB(p)	£17,000.00	£3,400.00	£20,400.00	£3,400.00	£17,000.00	£338.58	3.90%
Timberwolf TW230HB(d)	£19,500.00	£3,900.00	£23,400.00	£3,900.00	£19,500.00	£388.38	3.90%
Timberwolf TW230VTR(p)	£27,995.00	£5,599.00	£33,594.00	£5,599.00	£27,995.00	£557.57	3.90%
Timberwolf TW230VTR(d)	£30,995.00	£6,199.00	£37,194.00	£6,199.00	£30,995.00	£617.32	3.90%
Timberwolf 160PH	£13,500.00	£2,700.00	£16,200.00	£2,700.00	£13,500.00	£268.88	3.90%

Terms and conditions:
Finance is restricted to business users only; available subject to status and credit acceptance, all applicants must be 18 or over. United Kingdom only. The above figures are based on a hire purchase agreement with full VAT and 1 advanced monthly payment due on signing. A documentation fee of £90.00 will apply and at the end of the agreement, if all payments have been made an option to purchase fee of £60.00 will be taken with the final payment and you will own the asset. This promotion is for limited companies only, sole traders and partnerships please request a full written quotation. The figures are correct at the time of printing but are subject to change prior to signing. Alternative finance products and services are available. Terms and conditions apply. This promotion is offered and arranged by Buckingham Leasing Limited, authorised and regulated by the Financial Conduct Authority FRN: 671552. Company Registration No: 4637226. Buckingham Leasing are acting as a credit broker and not a lender and may receive payment from the finance provider if you decide to enter into an agreement, this will be disclosed if requested. Registered address: Waterfield House, Wellmore, Foscott Road, Maids Moreton, England, MK18 1QQ. The figures are valid until 30/04/2024 unless it is withdrawn earlier.



OFFICIAL SUPPLIERS OF AVANT

Since 1991, Avant Tecno has manufactured more than 70,000 loaders at their manufacturing plant in Ylöjärvi, Finland. The company has sales offices in Germany, UK and US, and import partners in more than 55 countries.

They are ideal for riding stables, equestrian yards, farms, smallholdings and constructions sites, for landscapers, building contractors, local authorities, groundcare and property maintenance professionals.



Sales · Parts · Service



The Avant Loader Range

The smallest loaders in the Avant range, the 200 Series start at just 960mm wide with 360° visibility and suitable for working where access is narrow or limited. The biggest 4WD loader is the 800 Series, capable of tackling the heavy duty tasks where a conventional loader or compact tractor would struggle.



800 Series

The biggest and strongest

The biggest and strongest model with powerful lift capacities and lifting heights.

LIFT CAPACITY 1900 kg
ENGINE POWER 57hp
LIFT HEIGHT 3.5 m
MAXIMUM SPEED 30 km/h



700 Series

Outstanding handling capacity

Test drive our big and versatile compact loader now and surprise yourself with its efficiency.

LIFT CAPACITY 1500 kg
ENGINE POWER 57hp
LIFT HEIGHT 3.1 m
MAXIMUM SPEED 26 km/h



600 Series

A perfect combination

The perfect combination of power and agility. Avant 600-series loader's versatility is sure to impress.

LIFT CAPACITY 1100 kg
ENGINE POWER 26hp
LIFT HEIGHT 2.8 m
MAXIMUM SPEED 20 km/h



500 Series

Robust and simple hydraulics

Get yourself the versatility in the same package with unbeatable performance.

LIFT CAPACITY 950 kg
ENGINE POWER 26hp
LIFT HEIGHT 2.8 m
MAXIMUM SPEED 19 km/h



400 Series

Uncomplicated and economical

A small loader with a low operating weight with maximized efficiency.

LIFT CAPACITY 550 kg
ENGINE POWER 22hp
LIFT HEIGHT 2.8 m
MAXIMUM SPEED 12 km/h



200 Series

Compact multi-functional

Looking for a powerful, small and compact loader? This is the one for you.

LIFT CAPACITY 350 kg
ENGINE POWER 25hp
LIFT HEIGHT 1.4 m
MAXIMUM SPEED 10 km/h



E Series

Perfect for indoor use

Avant's full electric yet powerful loader. Zero emissions with low operating costs.

LIFT CAPACITY 900 kg
BATTERY CAPACITY 13.8 kWh
LIFT HEIGHT 2.8 m
MAXIMUM SPEED 10 km/h



Exciting Financing Options

**HURRY!
OFFERS END
SOON!**

Offers valid until 31st March 2024

ALL NEW 860i DEALS

0% - 20%
Deposit - 24 months



ALL NEW 200-700 SERIES DEALS

0.99% - 20%
Deposit - 24 months



Terms and Conditions: Finance for business purposes only. Subject to acceptance and affordability checks. Applicant must be 18 or over. Promotion valid until 31st March 2024. Available on new equipment only with minimum RRP of £5,000. The finance product offered under this promotion is hire purchase. Full VAT is due on signing. An option-to-purchase fee of £100 plus VAT will be collected with the final payment. You will own the machine when all payments have been made. Alternative finance options are available, terms apply. An annual administration fee of £40 plus VAT applies. A documentation fee of £95 will be collected with the first rental. Images are for illustrative purposes only. The offer is subject to a maximum balance to finance of 80% of dealer invoice price excluding VAT, excluding attachments. Finance provided by BNP Paribas Leasing Solutions Limited, Northern Cross, Basingstoke, RG21 4HL. Registered in England No. 901225. As funder, BNP Paribas Leasing Solutions Limited may pay a commission, fee or other remuneration to credit brokers who introduce business to them; please contact them if you require more information.

JOINING FORCES



We are delighted to announce that Harper Plant are joining forces with Lister Wilder, combining the strengths of two very established companies within the Kubota dealer network.

Andy Harper explained "This move allows us to look after our customer base within the supportive structure of Lister Wilder...something that has big benefits for everyone involved" before adding "Both companies feel that we have the same shared family values and dedication to looking after and understanding the Construction Industry customers and their needs, which would lead to a good merger of companies."

The move means that Lister Wilder increase our coverage across Central Southern England...with six retail Kubota centres and just under two hundred people in the team. This means there is more support on hand, there will be access to more stock and the positive gains when you combine the best bits of two well established companies in the Kubota dealer network.

Charlie King (MD of Lister Wilder) explained "We have three pillars to our business – the Agricultural, Groundcare and Construction divisions...all of which benefit from shared resources whilst retaining their own identity and specialist teams within them".

He continued "The operation at Salisbury will be a Kubota centre that continues to focus on Construction machinery. Its clear that Andy has built something he and the team should be very proud of, and we will be working together to ensure everyone has a very bright future with ourselves and Kubota."

Please do get in touch with us if you have any questions about this news and we hope you share the excitement for the future of both us and Harper Plant Hire.



"... We will be working together to ensure everyone has a very bright future with ourselves and Kubota."

Charlie King



"... We have the same shared family values and dedication to looking after and understanding the Construction Industry ..."

Andy Harper

SAVE UP TO 40% ON KUBOTA SERVICE KITS

When you buy GENUINE filter kits from Lister Wilder

SAVING EXAMPLE

KUBOTA
KX019
1,000 HOUR
SERVICE KIT

Special Price £170.00

Compared to loose filter pricing of RRP £284.00

Part number: KU-W21CK00333. End date - 30th April 2024



Ryetec manages a fragile environment

A round at Hayling Golf Club on the South Coast is a memorable experience at any time. A classic seaside links with subtly undulating greens, hidden borrows and some cleverly positioned bunkers, it offers a pleasurable challenge as well as some outstanding views.



But at the right times of year your round could also take in a glimpse of a merlin or peregrine. You could also tune in to the songs of the Dartford warbler, linnet or skylark; while down at ground level, you could well enjoy a colony of striking green winged orchids, and butterflies in profusion. No surprise then that the site justifies SSSI status and that the responsibilities of Hayling Golf Club include a big slice of management.

Hayling is far from alone in its conservation mission. With over 3,000 golf courses in the UK contributing around 126,000 ha of green space, they are well placed to help provide for wildlife and provide connectivity between habitats.

Answerable to Natural England in caring for the SSSI, the role is one that the 500 members at Hayling take seriously to the extent that the club has invested in mechanising the substantial task of cutting grass in wilder areas and trimming the gorse that would otherwise take over more than its share of this fragile habitat. The machines chosen to do the job are a pair of Ryetec flail mowers sourced from Area Sales Manager Mark Carter at Lister Wilder.

Also ideal for leaf collection, the smaller P1600 that has been chosen for the rough grass has a cutting width of 1.6m and a hopper capacity of 1.3 cubic metres, with a height of cut of up to 150mm. The larger C2000 has cutting widths up to 2.2m and employs heavy duty hardened cast flail hammers. It also offers optional front castor wheels that are height adjustable, and fine cutting height adjustment. A floating linkage allows it to follow ground contours effectively.



“We could have spent three times the money on a competitor, but the end result and quality of finish would have been no better,”

Providing the power for the Ryetecs at Hayling is a Kubota M5 tractor with 95hp engine, regarded in the industry as both reliable and highly efficient. Thanks to its bevel gear front axle and high ground clearance, the M5 is extremely manoeuvrable, which is key to the gorse cutting operation.

Course Manager Greig Easton is in no doubt that the Ryetecs are delivering excellent value. “The price was a consideration in choosing them as opposed to competitors that cost a great deal more,” he says. “We could have spent three times the money on a competitor, but the end result and quality of finish would have been no better, the Ryetecs are perfectly suited to our needs.

He adds: “I am really happy with them. They are light and manoeuvrable on the back of a tractor and have proved to be very reliable while doing a tough job. They save us a great deal of time when compared with cutting with a hand mower and raking up, or cutting by hand.”

Managing invasive gorse is one of a series of multi-faceted challenges that define the role that Greig has fulfilled at Hayling over the past six years. Another occupational hazard lies in maintaining a green sward given that the course has little soil and is built on sand overlying gravel.

“We have to make efficient use of the water resources we have got and are working with a hydrogeologist at the moment to make more of the water that we have beneath the site,” he says. “It is very challenging but also very rewarding because we have improved the course a lot in recent years in terms of the aesthetics, the topography and the challenges that it poses for the golfer.”

Our interview with Greig took place shortly before he took on a whole series of new challenges as Course Manager at the celebrated Royal St George’s at Sandwich.



Electric Greens Roller

NO OIL, NO HEAT AND NO NOISE

The Electric Greens Roller, QC is the result of years of testing and product improvement. Both rolls are driven, each with its own heavy duty gear box and electric motor. There is easy access to all electrical computations with a self-diagnostic controller. The speed is variable, up to 11.9 Miles Per Hour.

The Electric Greens Roller comes with a 36V Lithium Battery Pack The Lithium Battery is light which will decrease the P.S.I. ground pressure substantially. It requires no maintenance and the projected life span is 10 Years! After rolling 18 standard size greens, there's 30% - 40% power left.



Available with 0% Finance whilst stocks last

Salsco HP11-III - Roller

GREENS - APPROACHES - FAIRWAYS

5-YEAR WARRANTY*

SALSCO fabricated a grander version of their premier HP11 Roller and produced the HP11-III Roller. The advantage is having three driven rolls that oscillate and articulate which guarantee 100% roll-to-ground contact and a 73" rolling swath with this advanced version.

The HP11-III is manoeuvrable, dependable, and built to meet the highest standards in smoothing any golf course surface.



Three Driven Rolls that oscillate and articulate guarantee 100% roll to ground contact which assures traction without slipping. The HP11-III travels over the ground following the undulations designed into the turf and smooths the surface without changing it. The almost 11mph ground speed and 73" rolling width makes it a machine that is hard to beat. With all three rolls on the HP11-III independently powered, traction up slopes and banks is exceptional in wet or dry conditions.

The Salsco Electric Greens Roller is now available from Lister Wilder.



Load & Go Guidance Rails make it a breeze to load the roller on the trailer. Nothing to adjust, unlock or lock. Simply drive off the green, drive up the tailgate ramp into the trailer, turn off electricity, engage the Lock & Latch, get off the roller, raise the lock/latch tailgate, and drive to the next green. Just as easy and fast in the reverse when arriving at the next green. A full heavy duty rubber mat is standard on both the tailgate and the trailer box. A swivel jack stand with a caster wheel is mounted to the trailer frame. It's also a great piece of equipment to use around the golf course when not being used with the roller

Standard Features Include

- 36V Lithium Battery!
- Dual Drive Oscillating Rolls for Positive Traction
- Articulating Steering
- Automotive Type Tilt Steering Wheel
- Forward/Reverse Seat Slide
- LED Light Kit
- P.S.I. EGR (with Lithium Battery) = 7.6 without water added to the rolls, 9.0 with water added to the rolls

FREQUENTLY ASKED QUESTIONS AND ANSWERS

- 1. Why create a 73" roller?** While most clubs continue to purchase multiple rollers, the HP11-III offers the ability to buy one roller and still be productive.
- 2. Any damage to the green?** No, the roll housings articulate at different degrees of travel, which allows turning without bruising.
- 3. How does it follow the undulations?** All three rolls articulate and oscillate to smooth the surface without changing the undulations designed into the green.
- 4. How is the traction?** There's 100% roll-to-ground contact, which assures traction without slipping.
- 5. What is the PSI?** With 168 sq. in. of contact surface and a weight of 1180, the PSI is low at 7.
- 6. What is your Warranty?** 5-year limited warranty. Honda engines carry a 2-year OEM warranty. Pumps, motors, hoses carry a 1-year warranty.
- 7. What other uses does the HP11-III have?** Tees, approaches, new sod, and top dressing when using our brushes.

FEATURES & BENEFITS

- 13hp Honda electric start engine
- 12-volt battery
- 6-gallon, CARB-approved fuel tank
- Engine cooling fan
- Three steel rolls that oscillate and articulate when driven
- Roll housings articulate at different degrees of travel, which allows turning without bruising
- All three rolls drive and float independently which allows for 100% roll to ground contact
- P.S.I. = 7.0 without water added to the rolls, 9.2 with water added to the rolls
- 73" rolling width = productivity
- You can add water inside rolls to increase PSI
- 100% roll-to-ground contact
- Traction without slipping
- Incredible climbing traction, up to 40°
- Increased speed
- Hydraulic steering
- Automotive type steering wheel
- Do more than roll with our accessories
- Transport trailer is standard

SPECIFICATION

Engine	13hp electric start Honda
Controls	On/off switch, choke & fuel
Battery	12-volt
Seat	Moulded cushion with protective edge trim
Brakes	Hydrostatic drive
Traction Drive	All three rolls drive and float independently
Hydraulic System	One heavy duty variable speed piston pump delivers oil to three hydraulic motors that drive the rolls
Speed	Variable, 0 - 11mph
Psi	7 PSI. 168 sq. in. of contact

Optional extras as standard on UK supplied machines

All of these options can be retrofit to units already in the field

- All UK machines supplied as standard with
- Top Dressing Brush Kit
- Transport Trailer
- Light Kit
- Seat Arm Rest Kit



Call your local area sales manager for more details





Worplesdon Golf Club invests in SALSCO



Sales • Parts • Service

Salsco roller rises to a steep challenge



A roller that readily copes with steep slopes is without doubt the order of the day at Worplesdon Golf Club in Surrey given that its rises and falls are widely regarded as amongst the most challenging in the south of England.

For Course Manager Paul Robinson it represents one of the key reasons for opting for Salsco HP11-III rollers, of which he currently has two, bought through Dave Gray at Lister Wilder's nearby Ockham branch. "The fact that it is a three-wheel drive vehicle means that we have never had any problem with traction," he says. "It goes up all our tiered McKenzie greens without any problem, and in some cases, they really are steep."

The beauty of the HP11-III is that each of its three oscillating rollers is driven independently, and each is making 100% roll-to-ground contact, so ensuring traction without slipping even in wet weather. It travels over the ground following the undulations designed into the turf and smooths the surface without changing it. The fact that the roll housings articulate at different degrees of travel also allows turning without bruising.

The other great strength of the Salsco is that it achieves an 11mph ground speed which, combined with a working width of 1,854mm, means that it can cover a lot of ground very quickly. In Worplesdon's case, that means that for much of the year, one roller can easily keep up with the two greens mowers when working in tandem through the morning set-up.

"We have two Salscos and at specific times of year we will run them both, especially if we are alternating rolling with mowing in the winter months," says Paul.



“It goes up all our tiered McKenzie greens without any problem, and in some cases, they really are steep.”

Course Manager Paul Robinson

Paul also likes the fact that the HP11-III gives him the option to add water to the rollers, which means that he can easily increase the PSI from 7.0 to 9.2, so making the surface smoother and gain green speed. UK importers Lister Wilder chose to include the deluxe seat, arm rests and LED lights in the standard UK specifications, although optional extras such as cross-contamination prevention kits, top dressing brush kits, and pedal extensions can be retrofitted if required.

Paul will soon celebrate 30 years at Worplesdon and has seen it change greatly over that time while still maintaining its reputation as a traditional members' club that is committed to high standards on all fronts, including maintaining the essential quality of its heathland.

One of Surrey's leading heathland courses, Worplesdon remains much as it was originally laid out by JF Abercromby in 1908 with greens and bunkers designed by Willie Park Junior. Neither of those golf course legends could have imagined the sort of modern day enhancements recently delivered via an impressive short game area alongside the first tee.

"Our new short game area has been greatly appreciated by members and guests alike," says Paul. "Many of our members now expect a first-class practice facility and we often have golfers paying us an early evening visit to perfect their short game." Also on the agenda at Worplesdon is updating the present driving range and a full replacement of the irrigation system.

Why Roll?

Some comments from Salsco customers:

- ➔ Reduces disease
- ➔ Controls the thatch layer
- ➔ Helps smooth the surface to give you a better mow
- ➔ Firms the soil for a better golfing experience
- ➔ Gives faster, smoother and truer ball roll on the green.

INTRODUCING STELLA



Sales · Parts · Service

URS 85 & 100 Tracked Remote Control Mowers

The URS is the champion amongst remote-controlled mowers, combining eye-catching design alongside outstanding power and performance.

Engineered to work on extreme slopes up to 55 degrees, with the remote-control functionality ensuring that the operator is always in a safe place, away from both dangerous terrain and hazards.

The URS mower can cut in both directions without needing to turn around, reducing damage to the ground, eliminating time spent on manoeuvring and improving safety.

URS FEATURES



Robust Y-Flails



Remote control



Lifting front flap



Auxiliary hydraulics



Hydraulic drive system



2-cylinder Honda engine up to 26hp

The hydraulically driven tracks provide excellent stability and traction, and the patented tensioning system eliminates the risk of losing a track in all working conditions.

Both models are powered by reliable Honda engines and are fitted with a two-stage 5" Donaldson air filter. The patented crawler drive system with sophisticated guide rollers ensures traction on all types of ground including extreme turning manoeuvres even on the steepest slopes.

A range of implements are available for the URS 100 which enable it to be used for multiple applications.

SPECIFICATIONS

Model	URS 85	URS 100
Engine	24hp Honda 2 Cylinder OHV 4-Stroke, iGXV 700 EFI	26hp Honda 2 Cylinder OHV 4-Stroke, iGXV 800 EFI
Petrol Tank	18 litres	
Cutting Width	85cm	100cm
Cutting Height mm	20 - 90 Electrically operated	20 - 90 Electrically operated <i>Option KIT HV (55 - 150)</i>
Speed	0 - 7km/h - forward/reverse	
Weight	580kg	640kg
Dimensions L x W x H	160 x 129 x 90cm	170 x 142 x 92cm

RACCOON Ride-on Flail Mowers

The robust range of Racocon ride-on flail mowers are made for tough use on either flat terrain with slight inclines with the 2WD model or for more demanding mowing including on steeper slopes with the 4WD models.

These ride-on mowers are suitable for maintaining shorter grass, long grass, undergrowth and brush effortlessly and reliably. These mowers are suitable for private and professional use including local authorities and garden and landscaping contractors.

In the event of unseen foreign objects, the flail mower unit is at significantly less risk of damage and ensures greater operator safety. Unlike a rotary mower, the flail mower

deposits the cut material in an even layer, creating visually perfect mowing results across the complete range.

The Racocon95 4WD MUN and the Racocon 110 4WD MUN are the perfect tool for the commercial operator. These machines offer a powerful 26hp engine, with a 5" Donaldson air filter ensuring an excellent fresh air supply for the engine even in extreme dusty conditions and take specialist mowers to a new level.

The deluxe driver's seat ensures operator comfort, and the LED beacon and work lights improve visibility and safety. Hammer flails are fitted as standard to ensure maximum mowing performance in the toughest conditions.

Key Extra Features of the Racocon 95/110 4WD Municipal include:



Large engine capacity



Deluxe seat with arm-rest



LED flashing beacon



LED work lights

SPECIFICATIONS

Model	Racocon 95 4WD	Racocon 95 4WD MUN	Racocon 110 4WD MUN
Engine	25hp 2-cylinder	26hp 2-cylinder	
Drive	4WD with 100% diff lock		
Petrol Tank	18 litres		
Cutting Width	95cm	110cm	
Cutting Height	30-90mm		
Flails	52 Y-Blades	26 hammer flail blades	30 hammer flail blades
Speed - fwd/rev	0-8 & 0-6km/h		
Weight	388kg	388kg	399kg
Dimensions Lx WxH	220 x 111 x 121cm	220 x 111 x 121cm	220 x 126 x 121cm

HIRE

Your renovation partner for hired in machinery



Call our new hire hotlines for your area



South East & Central
03330 069 545

South West
03301 659 599



Hire from
£120
per day



Rink DS 800
Wide-spread top dresser with electronic controls



Hire from
£156
per day



DS 1200
Wide-spread top dresser with electronic controls



Speedbrush
A towable grooming machine



Hire from
£168
per day

RootPruner
A towable grooming machine



Hire from
£180
per day

FS900
Ride on core collector



ProCore 648
Carrier with vertical tine aerator



Hire from
£238
per day



Verti-Drain 2519
Vertical tine aerator

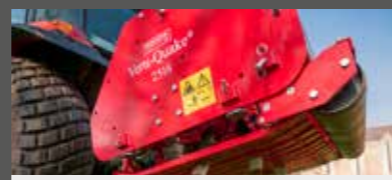


Hire from
£198
per day



OxyShot
Air Injection Unit

Hire from
£104
per day



Verti-Quake 2516
Decompactor



Hire from
£212
per day

Verti-Drain 7215
Vertical tine aerator



Hire from
£115
per day

Rink DS3100
Wide-spread top dresser with electronic controls

Hire from
£186
per day



Hire from
£129
per day



Verti-Drain 7416
Vertical tine aerator



Hire from
£227
per day



Verti-Drain 7521
Vertical tine aerator

Hire from
£236
per day



AutoRake MK5
Pedestrian scarifier



Hire from
£154
per day

1275 OverSeeder
Compact disc seeder



Hire from
£194
per day

CC1200 HL
Pedestrian core collector



216
Super compact series double disc system seeder



Hire from
£154
per day



1500 Speedseed
Seeder



Hire from
£104
per day



1575 OverSeeder
Compact disc seeder

Hire from
£88
per day



Cultipack
Seeder



P1600
Heavy duty Low dump flail mower

Hire from
£300
per day

Prices are shown exclusive of VAT which will be added at the prevailing rate

Delivery charges apply, quotations available upon request. Hire prices shown above are based on per day for a minimum of one week hire. Please call for alternative reduced periods of hire if required. There will be an additional cost if a tractor is needed. The Ryetec P1600 is also available with scarifying knives. Note: scarifying knives will require an extra charge.



Long Ashton Golf Club chose Lister Wilder Hire for Renovation Works



Getting to the Roots of a Compaction Challenge

Golf's ever growing popularity brings with it a host of benefits, but it also poses challenges that an experienced Course Manager like James Braithwaite takes seriously. In particular, more golfers playing increasingly regularly - and often over 12 full months of the year - can create significant greens compaction.



If drainage becomes less efficient, grass roots will be prevented from absorbing oxygen and the overall quality of the greens will be diminished. While hollow tining allows the compacted turf to expand and air and moisture to be more easily absorbed, it needs to be planned with care in order to minimise disruption to loyal golfers.

It is with that in mind that James added a Redexim Core Collector to his extensive shed of equipment at Long Ashton Golf Club on the edge of Bristol - and he is glad he did. "I initially hired one from Lister Wilder for a week, and that allowed us to do not just the greens but the tees as well to very good effect," says James. "We decided it was useful to have one readily available for a wider programme so we bought one in the early part of this year."

James reckons that in the course of a typical day, and with two of his team engaged, they can get 12 to 14 greens cored and cleaned of the debris. A pedestrian operated machine, it collects cores and debris into a hopper that empties hydraulically, potentially saving many man hours.

"We find that's it's a perfect size - not too big and not too heavy," says James. "The idea of getting this model was that the ground pressure is not too great so it doesn't cave in the holes created by tining. We dress across it and make good with a sweep and fill brush. The core collector is robust, easy to use, works well in the wet and is reasonably priced."

“I initially hired one from Lister Wilder for a week, and that allowed us to do not just the greens but the tees as well to very good effect,”

Course Manager James Braithwaite

James is working towards a programme that involves hollow coring in October and then regular scarifying and lighter micro tining from March through the summer to keep compaction at bay.

Lister Wilder's hire option means that courses can if they prefer take advantage of a special renovation rate, with the machine typically delivered either on a Friday or Saturday prior to the hire, ensuring that it is ready to start work early on a Monday morning.

In the hands of James and his five-man crew at Long Ashton, the core collector is making a useful contribution to a course with a big reputation. Projects they have handled in-house over recent years include a bunker regeneration programme that involved re-shaping, installing artificial faces and putting down a rubber crumb liner.

The course at Long Ashton started its life in 1893 with nine holes. Twelve years later, acquisition of further land provided the stepping stone to add a second nine holes. Set in 220 acres of mature wooded parkland and situated just ten minutes from Bristol's city centre, Long Ashton

is today one of the area's premier golf clubs. It has 800 members and a forward looking approach to adding features like a 16-acre driving range equipped with Trackman to radar track the ball in real time - an invaluable aid to better driving.

But no amount of technology will replace the human skills that make the course what it is. "I have a fantastic team and they have really smashed it this year because the course is looking and playing superb," says James. He is, however, the sort of course manager who attracts loyalty. He typically starts his working day at 4.15am and then, after clearing paperwork, heads over to the clubhouse to fetch each of his greenkeepers a coffee for their 6am arrival. He also provided the thermos style mugs that ensure that those drinks stay warm for longer!

For more details on this machine and to try it out for a demonstration - please contact your nearest area sales manager

Blind Paralympian Needs her Support Team

Behind every great sporting champion usually stands a team of people. It's no different for Paralympian dressage rider Nicola Naylor, except that the support she needs has to cater for the fact that she is blind!



It is especially so in the dressage arena, aptly described as ballet on horseback. A member of Nicola's team stands at the centre point and calls out the letters that tell her exactly where she will be a metre before her horse reaches the spot. The same degree of planning is needed right through her day; everything has to be meticulously placed so that she knows exactly how many steps it takes to find what she needs to do next.

It's a similar story at her home in Appledore, Kent. There, she stables and works her younger and semi-retired horses in her own arena while travelling two hours four times a week to her trainer, Sarah Millis, in Horsham to train her other competition horses. Her arena at home has to be maintained to a high level of perfection, including a totally level surface with the correct degree of firmness on which she practices. For this, her key person is Sinead Balchin who, amongst other responsibilities, harrows the surface with great precision using a Yamaha Kodiak 450EPS buggy hauling a Chapman



“The maintenance of the surface is critically important and, depending on the time of year and how much it is being used, it needs harrowing a minimum of weekly,”

MG250 arena leveller. Nicola invested in both on the advice of Phil Turner, Area Sales Manager at Lister Wilder's nearby Ashford branch.

The Chapman leveller is used world-wide for all types of equestrian arenas and is designed to be both robust and easy to use. The fully galvanised heavy-duty construction is based around a robust delta shape which deflects any fence posts with which it comes into contact. It has large wheels for easy and smooth towing and high-quality spring steel harrow tines, plus an optional rear consolidation roller.

The Yamaha buggy also comes with a reputation for reliability and a reserve of power it doesn't often need to use to perform its key role in Nicola's 60 x 20 metre outdoor arena with its sand/fibre mix surface and underground irrigation system. The buggy's drive system allows seamless switching between two and four-wheel drive at the push of a button, and there is also an automatic transmission to smooth the process.

For Nicola, the work carried out by the buggy and leveller is vital. “The maintenance of the surface is critically important and, depending on the time of year and how

much it is being used, it needs harrowing a minimum of weekly,” she says.

The system put in place by Nicola seems to work. She competes not just as a Paralympian but also in able-bodied events. She was on the reserve list for the World Equestrian Games in 2022.

Nicola has ridden all her life, but in her childhood and teenage years had partial sight but managed to show jump with a pony. The transition to horses posed an altogether bigger set of issues so she stopped riding when she went to university and decided to pursue another career. Sadly, during her university years, she lost the remainder of her sight. It was only when her daughter started competitive riding that she was encouraged to try it again and developed the system that enabled her not just to compete but to succeed at a very high level.

The partnership with Sarah and the other members of her support team is, she says, absolutely imperative. “They make it work for me,” she says gratefully. “Competing presents a lot of challenges and I have to go into a zone to keep my focus.”

*Sinead Balchin features in the photographs

UMX AC

YOUR GOLFERS' EXPERIENCE JUST GOT AN UPGRADE.



Yamaha have put the needs of golfers and course owners at the heart of every Yamaha product, and the new Drive² AC Li is no exception. Building on the success of the Drive² AC AGM, this model has a lithium-ion battery which, thanks to its 25% lighter weight (only 331kg), allows for higher speeds and reduces wear on turf, tyres and brakes.

Yamaha have retained the best-in-class seating, luxury and versatility of the Drive² AC AGM and introduced a Roypow[®] LFP battery that provides up to eight years of life with zero maintenance, with faster charging. The fully independent front suspension has also been optimised to complement the lightweight lithium-ion battery and deliver a smooth comfortable ride.

- Yamaha developed lithium-ion battery
- Battery is maintenance free for up to eight years
- Class-leading 3.3kW AC electric motor
- Spacious automotive-style dash with extra storage
- Virtually silent running with zero emissions
- State-of-the-art regenerative braking
- Light and strong automotive ladder style chassis design



UMX AC

UMX AC. GETTING THE JOB DONE – QUIETLY!



Whether it's chosen for a large-scale commercial property or simply to assist with the everyday workload on a smaller estate or farm, the UMX AC is the perfect workhorse. It's quiet, smooth easy-to-drive nature makes it the perfect choice.

The UMX AC has a tough, durable aluminium body with 2 comfortable seats and good load-carrying space, so you can take along the right equipment. At its heart is a punchy 5.0 kW motor that delivers super-quiet power.

With its positive 'can-do' attitude as standard, the versatile Yamaha UMX AC is ready to empower your workforce and increase productivity. Job done.

- Light utility and maintenance vehicle
- Aluminium cargo bed with one-touch tailgate
- Two separate seats with centre console
- Powerful 5.0 kW electric motor
- 29-Litre front storage box - onetouch opening
- Skid plate for non-extreme on-road situations
- Wide tyres for comfort on and o-road
- Strong reflector-type LED light units



3.3 kW electric motor

Smooth suspension

Comfortable contoured seats

Modular body design



Aluminium cargo bed with onetouch tailgate

2 individual seats and centre console

Smooth, punchy 5.0 kW electric motor



5.0 kW electric motor

Independent front suspension

IRS - Independent Rear Suspension

Powerful LED Headlights



Rugged and durable bodywork

Spacious 29-Litre front storage box

Tough skid plate and stable suspension



Bristol Rovers FC invests in Dennis



Sales · Parts · Service

Dennis earns its stripes for Rovers

The turnstiles of a typical English football stadium may go quiet through the summer months but it is not a time when the groundsman teams can afford to take a rest. For them, the absence of fans heralds a hectic few weeks when the pitch needs to undergo a rapid transformation in order to be turned around ready to start a new season.



“... the quality of cut is truly fantastic as is the striped-up finished presentation. That final look is very important to any football club.”

Deputy Head Groundsman Ben Ford

At Bristol Rovers' Memorial Stadium through the summer that involved completely stripping the surface, removing all the vegetation, adjusting the levels and installing a new sand banding system to improve drainage and re-seeding. All had to be achieved in a matter of about six weeks. Only when Deputy Head Groundsman Ben Ford rolled out the two Dennis PRO 34R mowers did you get the sense that the pitch really would be ready for the first home game against Barnsley.

Meanwhile, Head Groundsman Daryle Sullivan and his support team were going through a not dissimilar process at the club's training ground some five miles away on the edge of the city at Almondsbury. There, the club has in recent times invested in two new fibre-sand pitches that echo the surface at the stadium. And when the job was done it was three more Dennis PRO 34Rs that applied the finishing touches.

The club acquired its Dennis mowers from Lister Wilder's local branch, which nowadays operates from Keynsham and has a long relationship with the club which finished the 2022-23 season in 17th place in League Division 1. As ever, in the coming season the Pirates will aim to do better - and it's much the same with the pitch at the Memorial Stadium which won the League 1 pitch of the season award in 2018-19 but has had its drainage challenges over recent times.

Worse still were disease problems, which saw brown patches take over the pitch after last year's heatwave. "It stopped the plant taking up moisture, so

for the first three or four games of the season we had patches all over the place," says Ben. "This time we have adjusted the grass seed cultivator to a more disease resistant variety and that, together with the new sand banding, should give us the quality of surface we are looking for."

In a sport in which only the best is good enough, Dennis is a reassuring presence for Daryl and Ben at both the stadium and training ground.

"I used to work at Gloucestershire County Cricket Club where we had another leading mower brand which did a fair job, but the Dennis was a total revelation when I came here," says Ben. "Beyond all else, its quality of cut is truly fantastic as is the striped-up finished presentation. That final look is very important to any football club."

He adds: "It's a brilliant piece of kit on all fronts and we never have any dramas of either the mechanical or health and safety fronts. The lads can all operate them without problems and can change the height of cut very easily if I am not around."

It takes around two to two-and-a-half hours to cut the stadium pitch in one direction or four hours to double-cut in both directions. The team typically cut five days a week.

Ben welcomes the support he gets from Lister Wilder's Area Sales Manager Ian Davies who he describes as a 'God send who provides invaluable advice'. On the mechanical front, he also speaks highly of engineer Del Holliday who is always welcome at the ground despite his support for Bristol City!

Key features of the PRO 34R include:

- A powerful vacuum flow which collects debris quickly and efficiently
- Five forward and one reverse gears for speed of operation
- A 90-litre grass box
- Fully adjustable angle of deck for changing conditions
- An easy to use height of cut gauge
- Adjustable handlebars for operator comfort
- Interchangeable cassette options - in Rovers' case a verticutter and brush

SCAG EVZ



Sales · Parts · Service

The EVZ is the first electric-powered unit in Scag's industry-leading lawn mower lineup. Clean and quiet operation is ensured whether you're using the EVZ professionally or domestically. No more dealing with a noisy engine, exhaust fumes or petrol cans to keep the lawn looking great. In addition, of course, the EVZ 52" mower is built to SCAG's very high standard to give years of service.



- ◆ Vanguard® Commercial Lithium-Ion Battery Pack. Dependable and efficient Vanguard 48V 5kWh Lithium-Ion commercial battery pack delivers the power you need
- ◆ 3-year battery warranty
- ◆ Vanguard 1050W battery charger included with each mower
- ◆ Heavy-duty construction ensures years of dependable service and worry-free productivity
- ◆ Low-maintenance mower design: Reduced grease points for operator convenience. No engine oil to change. No belts to replace
- ◆ Ground speeds up to 7mph for high productivity
- ◆ Extra-low centre of gravity for maximum stability
- ◆ Large 11" front caster tires and 20" drive tires for solid traction and a smooth ride
- ◆ Well-stocked instrument panel with all controls in convenient reach of the operator
- ◆ Wide, spacious footplate with raised pattern for secure footing while getting on and off the mower
- ◆ Comfortable, adjustable, cushioned seat for a smooth ride
- ◆ Large-diameter, padded, adjustable steering levers for ergonomic operation
- ◆ Powder coat paint for a showroom-quality finish and increased durability

PRODUCTS

Mowers and accessories are designed to be user-friendly, with an emphasis on quality, performance, ease of maintenance, profitability and long life.

ZERO-TURN RIDERS

The ride-on machine range then starts with the well priced Liberty Z, Freedom Z, Patriot and the Tiger Cat [small platform – big performance] range. Then the Cheetah comes in with its emphasis on high ground speed to simplify transport requirements between areas. Finally, the magnificent Turf Tiger range: with its unique place in the market by virtue of direct PTO drive to the deck.



STAND-ON MOWERS

The SCAG Ride-on mowers have traditionally favoured the layout of having the operator as close to the centre point of the machine as possible, and the V-Ride machine retains this but with the operator standing as opposed to sitting. The machine is now in its second generation after much field research by SCAG and enjoying much success and accolade.



PEDESTRIAN MOWERS

Four machines are in this range: the SFC 30 is a finish mower with a 30" cut. The SW entry-level large-area model is a belt drive hydrostatic unit. The more advanced SWZ model is belt-driven with twin wheel motors to give true zero-turn facility. SWZs have a wide engine range, plus options to maintain their position as one of the most popular and useful pedestrian machines on the market.



BLOWERS AND VACUUMS

They decided to add to the range by incorporating leaf and debris management equipment and purchased the Giant-Vac company. The products were then brought into manufacturing alignment with the rest of the SCAG range, meaning customers know these products will have the same level of quality and robust construction they can expect from SCAG.



REMOTE CONTROLLED

Developed in conjunction with a tracked vehicle specialist, the RoboFlail has proved very successful in the market place. Operable up to 45 degrees on banks, the machine comes with the option of two types of deck to suit the area. The operator uses an easily portable control module, and can be up to 300 metres distant. There is the added benefit of removal of hand-arm vibration issues.



Merlo presents GENERATION ZERO



The first full-electric telehandler

eWorker: the first full-electric machine is born. The progenitor of a generation destined to become an entire family of products, more green and technological.

The new range aims at reducing environmental impact and increasing driving comfort, manoeuvrability and performance. Product development has required considerable investment by Merlo, including in terms of research and productivity. The new machines will be built

in-house, thanks to the development of a production system integrated into a digitised platform, tailor-made and conceived in a high-tech perspective.

With Generation Zero, Merlo is ready to write a new chapter in its long history of innovation, which stems from the desire to promote a more sustainable, environmentally friendly and future-oriented way of thinking and working.



eWorker 25.5 THE BRAND NEW ELECTRIC TELEHANDLER WITH 0 EMISSIONS

Electric telehandler range:
Safety and respect for the environment

The continuous search for specific innovative solutions and technologies has led Merlo to the creation of an exclusive range of telehandlers respectful of the environment and 100% powered by electric batteries.

These machines are designed to completely reduce noise levels and polluting emissions. They increase manoeuvrability in confined spaces, and drastically reduce operating costs.

The new range of electric models is the ideal tool for applications in closed environments such as stables, warehouses, materials sheds, industries and underground environments. They ensure operation and traction even in off-road situations for the needs of municipalities, construction, agriculture and landfills.

eWorker models

Range consisting of two different models:

eWorker 25.5-60
with configurations for all industries including construction, rental and industrial sectors

eWorker 25.5-90
with configurations for agricultural and livestock sectors.



Performance + Efficiency + Zero Emissions

- Max load capacity 2,500kg
- Max lift height 4.7m
- Max reach 2.5m
- Load capacity at max reach/lift 900/1,500kg



THE MERLO TELEHANDLER RANGE



**Merlo Panoramic
Ultra Compact Range**

With a width of 1.86 metres and a height of 1.96 metres, these telescopic handlers offer unparalleled manoeuvrability and accessibility, lifting up to 2,700kg and reaching lifting heights of 5.9 metres.



**Merlo Turbofarmer
Compact Range**

These models represent the ideal compromise between performance and size; the lifting capacity increases up to 3,300kg with a lifting height up to 8.6m which reduced overall dimensions.



**Merlo Turbofarmer
Medium Capacity Range**

Offering a wide variety of models with loads of up to 4.2 tons. Offering capacities 3300 - 4200kg, lifting heights of 6.6 - 9.5m, turbo engines of 136 - 143hp, Load Sensing hydraulic systems and more.



**Merlo Turbofarmer
High Capacity Range**

These High Capacity models are designed for the demanding jobs. They can handle very heavy loads with high stability and safety with high manoeuvrability and a wide choice of attachments.



**Merlo Multifarmer
34 Range**

These models represent the revolutionary Merlo solution for performing all farm work: handling, lifting, transporting loads and operating attachments with a high level of performance for operations.



**Merlo Multifarmer
44 Range**

These larger models are designed to offer a telehandler equipped with a boom that can manage loads of 4 tonnes, working at heights of 7 and 9 metres and with 170hp engines.

**MERLO
OVERALLS
SPECIAL
OFFER**

**£59.99
+VAT**



CINGO MULTI PURPOSE TRANSPORTERS



CINGO M500 MINI RANGE

This mini dumper, which is available in three versions (tipper dumper, dumper with self-loading loader, agricultural small dumper) is a compact easy-to-handle transporter.



CINGO M8.3PLUS

Thanks to its compact size, the Cingo M8.3Plus is the ideal multi-function machine for working in particularly narrow spaces.



CINGO M12.3EVO

The Cingo M12.3EVO, equipped with gear motors and integrated parking brake, is the larger and more versatile multi-function machine.



HANDLER 400

The exclusive Handler creates a genuine compact telescopic handler, mounted on the Cingo M12.3EVO model.

The Cingo multi-purpose transporters are compact and easy-to-handle machines designed for working in tight spaces. The versatility and multi-tasking aspect of the Cingo system is unique: the patented device for rapid coupling allows numerous attachments to be used.

The wide range available includes models with capacities from 400kg to 1200kg and there are three types of machine:

TRANSPORTERS machines for transporting and loading materials.

MULTI-FUNCTION MACHINES for transporting and loading materials coupling with numerous attachments that can be used with them.

HANDLER 400 the exclusive Handler system, coupled with a wide range of attachment suitable on the boom head, consists in a compact telescopic handler on tracks

ACT NOW!
Promotion ends
31st March
2024

CINGO 700TD

0%
INTEREST

PAYMENT 1: MARCH 2024

PAYMENT 2: JUNE 2024

PAYMENT 3: JUNE 2025



MULTI-PURPOSE AND MULTI-FUNCTION SYSTEM

The Cingo has a uniquely versatile and multi-purpose system. This hydraulic controlled coupling system is patented and allows you to replace numerous attachments quickly and easily. The multi-functional Cingo are available in two models: M8.3PLUS and M12.3EVO.



CEORA
CEORA
CEORA

MAKE THE BEST IMPRESSION



Sales · Parts · Service

CEORA™ Professional large-scale turf care

The next-generation robotic mower, CEORA™, is the ultimate solution for all green space professionals handling large turf areas. With systematic cutting and virtual boundaries, large turf management is made easier than ever – while delivering outstanding results.



NEW

AVAILABLE NOW!

Green and inviting environments for residents, visitors and customers are crucial to any facility. And the best way to safeguard these green spaces is with the Husqvarna CEORA™. Their cutting system with razor blades in combination with a systematic cutting pattern delivers impressive turf quality helping to create first impressions that turn visitors to returning customers.



CEORA™ is here to change the game

With its state-of-the-art EPOS satellite navigation technology, CEORA™ keeps your large lawn space perfectly cut and improves turf quality whilst workforces can focus on the more important tasks at hand.

It has an unrivalled cutting capacity of up to 75,000m², it operates without physical boundaries, and it is designed for the most demanding professional applications. Get in contact with us to learn more about CEORA™.



Covering more turf than ever

When it comes to handling large turf areas, CEORA™ leaves nothing to be desired. A flexible solution that covers areas up to 75,000m² and exceeds the demands on time, turf quality and usability.

Cutting both turf and costs

Compared to traditional mowing of larger areas, CEORA™ offers an opportunity for more sustainable and cost-efficient operations with significant savings on labour and equipment costs.

Systematic mowing for winning results

Cutting systematically in parallel tracks means CEORA™ is equally efficient whether managing football pitches or any other large green space. By only cutting a small amount each time with frequent, systematic high precision, the results are perfect.



Husqvarna robots cut the man hours

It's 5pm and the final visitors are drifting homewards through the gates at the end of another glorious day at Sudeley Castle in the Cotswolds hills. If you listen hard, there's just a faint hum on each of the three large lawns as the night shift 'clocks in' at the beginning of a potential 17-hour trimming session. Robot mowing has arrived in one of Britain's most historic settings.



Neither darkness nor light rain will stop a process that has now been handed over to a crew of six Husqvarna Pro Automowers supplied by Lister Wilder from its nearby Bibury branch. There will be no tea breaks or time off sick - just the occasional trip back to base where each of the mowers can pick up a recharge before carrying on its relentless consumption of grass.

Located on the edge of the medieval market town of Winchcombe, Sudeley Castle has ten notable gardens covering some 15 acres within a 1,200-acre estate. It was famously the home of King Henry VIII's last surviving wife, Queen Katherine Parr, who lived and died there and is buried in the grounds. It is now the home of Elizabeth, Lady Ashcombe, and her family. They remain committed to the continued preservation of the castle and the ongoing restoration of the gardens.

The fact that the Automowers can work seven nights a week (or days if it suits your routine) means that the lawns always look good and are a constant length. Such is the fineness of the grass taken off in each pass that the turf never appears untidy, and there is no waste to remove since the clippings are micro-mulched back into the surface.

The Husqvarna team reports to Sudeley's Head of Security and Maintenance, Ryan Dearnaley who explored the potential for robots after tackling the lawn mowing single-handed during lockdown. "I did some research on the

“Lister Wilder have been brilliant all round on the installation and all other aspects, . . . At the end of the season they come and collect them for servicing, store them over-winter and bring them back.”

Head of Security and Maintenance, Ryan Dearnaley

different options and chose the Husqvarnas because the brand is a good one and their range of professional mowers fits our needs," says Ryan.

"We originally thought that it might save us one member of staff but what we have actually done is to redeploy the time that was spent on grass cutting. We used to spend four man days a week cutting grass and, given that we still need to hand cut some narrower areas, it now takes just one day. It is an absolute no brainer!"

He adds: "The 'Huskys' have been absolutely fantastic - the lawns haven't looked this good for years. Given the fineness of the cut, there is no thatch and the moss is reduced because it never takes hold. The other key factor for us is that we are not burning fossil fuels so it's helping us to reduce our carbon footprint."

The Sudeley fleet consists of three Husqvarna Pro Automower 550s and three 535s. The 550s are capable of covering an area of around 5,000m² and working on inclines of up to 24°. Their typical mow time on one charge is 270 minutes, with a charge time of about 60 minutes.

The 535s have a working area capacity of around 3,500m² at a rate of 146m² per hour. Equipped with all-wheel drive, they can also handle a slope of 35°.

Lister Wilder scheduled the free-of-charge installation of 13-amp sockets and boundary wires within which the mowers operate. Much like a central heating system, each mower is programmed to operate reliably around Sudeley's requirements. A year later, the lines left by insertion of the wires are invisible. "Lister Wilder have been brilliant all round on the installation and all other aspects," says Ryan. "At the end of the season they come and collect them for servicing, store them over-winter and bring them back in good order for the next season."

Much like a central heating system, the mower is programmed to operate reliably around your own needs and requirements. Once finished, it will return of its own accord to its charging station, to ready itself for its next mow. Control can, if wish, be via Husqvarna Fleet Services - a digital tool that allows you to monitor and control them easily from your smartphone, tablet or laptop.

Finance options to meet every consumer need

Kubota Finance
direct, easy & affordable



You can choose between four finance products which can all help to support specific business objectives.

Each one is based on regular payments to suit your budget, but offer different benefits to suit a variety of financial situations.

Hire Purchase

- ✓ Puts you in complete control. You decide how much deposit to set down, how long the contract lasts, and the value of your regular payments. At the end of the contract, you own the machinery you chose.*
- ✓ Offers long-term stability because repayment amounts won't change over time. The interest rate remains constant, making it easier to budget throughout the term of the agreement. In addition, you may be able to claim the value of your Kubota machinery as part of the Annual Investment Allowance, reducing your tax liability.

Operating Lease

- ✓ **Reduces risk to you** if you don't wish to own the machinery. At the end of your agreement, you can return the equipment** and start a fresh hire agreement with your new Kubota equipment.

- ✓ **Minimises upfront and total costs.** No deposit is payable, and the total amount you pay will take account of the machinery's residual value, not solely its new value. You can significantly reduce your overall investment and still benefit from new equipment.

Contract Hire

As Operating Lease, but with an additional benefit:

- ✓ **Makes service and maintenance easy.** This cost is included in your regular fixed payment, offering extra convenience and peace of mind.

Finance Lease

- ✓ **Keeps rental payments low.** Finance Lease helps you avoid a large upfront deposit by allowing yourself to spread the VAT cost over the term of your agreement. Payments can normally be offset against taxable profits too, making Finance Lease an efficient option.
- ✓ **Offers end-of-contract flexibility.** At the end of the agreement, you have three options: you can sell the equipment and use some of the proceeds to fund a new asset, return the equipment, or extend your agreement and continue to use it.

Introducing
KUBOTA Finance:
direct, easy and
affordable



Kubota Finance is dedicated to helping you buy the best possible value groundcare or construction equipment for your business.

If Kubota machinery is part of your business, Kubota Finance will help you prosper by:

Facilitating superior machinery

Kubota machinery is recognised as industry leading across Europe. By choosing Kubota Finance for your business, you can make it

easier to afford high quality, reliable equipment from Kubota, and operate a successful business.

Enabling business success

Kubota Finance is backed by BNP Paribas, one of the largest banks in Europe with an excellent track record of stability - providing funding even during times of recession. This consistency means you can trust us to provide secure, competitive finance solutions.

New Team MEMBERS

GUILDFORD BRANCH



IT IS WITH PLEASURE THAT WE CAN INTRODUCE TO YOU A NEW TEAM MEMBER - MARK ZEALANDER.

Many of you will know Mark having worked for a respected neighbouring dealer for the last 14 years. Mark Joins us as an Area Sales Manager working from our Ockham branch at Guildford. His experience in the industry, and understanding of customer's needs (having been one himself) means that he is an ideal replacement to take over from recently promoted Tim Vines in an area of Surrey surrounding the branch.

Mark will be making his way around customers old and new, but if anyone wants to contact him in the meantime you can reach him on:

07484 090 251
mark.zealander@listerwilder.co.uk

Please join us in welcoming Mark Zealander to Lister Wilder.

GROUP ROLE



WE ARE THRILLED TO CONFIRM THE INTERNAL PROMOTION OF TIM VINES TO THE POSITION OF "HEAD OF GROUND CARE SALES."

Tim Joined Lister Wilder in 2012 where he has worked as an Area Sales Manager based at our Ockham branch in Guildford, looking after customers in the North Surrey and South West London area.

Phill Hughes (Sales Director) commented – "Tim has played a valuable part in the success of our Groundcare Team and I'm really pleased to be able to promote him to this position. He has a full understanding of our customer's expectations and will work with the team to ensure that we meet their, and our manufacturers requirements. Lister Wilder is a company that believes in promoting from within where possible as it ensures that the ethos the company encourages is replicated."

READING BRANCH



WE ARE DELIGHTED TO ANNOUNCE THE RETURN OF A FAMILIAR FACE TO LISTER WILDER READING - MARTIN MACQUEEN.

Martin re-joins us in Groundcare Sales at our Reading branch where many would have previously known him. With the uncoupling from AGCO three years ago Martin left Lister Wilder to join Chandlers however now looking for a career change with a move into Groundcare sales we are delighted to welcome him back.

He first joined Lister Wilder in January 2001 at Reading where he was responsible for selling Fendt and Massey Ferguson tractors along with many other products in the range and also became product specialist for Honda ATV. More recently following the uncoupling with AGCO he moved to Chandlers Farm Equipment where he spent three years at their Wallingford branch in a similar role.

He was born and raised in Wallingford and now lives in Didcot, Oxfordshire with his wife. He enjoys football, supports Southampton and regularly attends live matches at the weekends with friends.

The other love of his life outside of work is motorcycling, he owns three bikes and enjoys trips to the Isle of Man and continental Europe on a regular basis.

Please join us in welcoming Martin back and wishing him all the best in his newly chosen career path. Martin will be making his way around customers, but if anyone wants to contact him in the meantime you can reach him on:

07388 995 723
martin.macqueen@listerwilder.co.uk



* Subject to payment of an option to purchase fee ** Subject to underwriting, documentation and the dealer's own offer to buy back.

FANTASTIC OFFERS

FROM OUR SHOWROOMS

All Prices Exclude VAT



STIHL MS 261 CM 16"
All-purpose professional petrol chainsaw for forestry work in small and medium-density areas. Easy starting engine with STIHL M-Tronic.
Product # ZS-11412000501

£350.00



STIHL HT133
270 – 390cm petrol pole pruner. Professional and lightweight
Product # ZS-41822000149

£515.00



STIHL FS 410 C-EM Pro
40cc petrol clearing saw with bike handle.
Product # ZS-41472000268

£525.00



STIHL RE271
10-120 bar cold water high pressure washer.
Product # ZS-47570124511

£395.00



HUSQVARNA 536LI XP 14"
High performance, lightweight chainsaw, ideal for commercial use and agriculture and utility. Powered by 36V Li-ion integrated or backpack batteries.
Product # ZV-966729114

£175.00



HUSQVARNA TR 348 II
Petrol cultivator with adjustable handlebar and reverse gearbox.
Product # ZV-970448601

£695.00



HUSQVARNA 525BX
Professional petrol leaf blower with cruise control. The anti-vibration system makes work less strenuous even during those long shifts.
Product # ZV-967284201

£185.00



HUSQVARNA BLi550X
15.6Ah 562Wh 36V Li-Ion backpack battery for 500 series. Providing long lasting power and a top class performance whatever the application.
Product # ZV-967093101

£395.00



HUSQVARNA LT 500S
Well-balanced and lightweight yet powerful rammer, developed for efficient compaction of granular and cohesive soils. c/w 230mm plate.
Product # ZV-967854603

£1,249.00



HUSQVARNA K535i Battery 230mm Saw Kit
Includes battery & charger.
Product # ZV-967983001

£555.00



TORO ES3000SD
30" (76cm) battery powered ride-on mower
Product # ZH-75500

Designed for lawns up to 2,500xm², this mower is ideal for quickly and easily manoeuvring around tight corners and through garden gates. You can even mow in reverse! With the option of mulching or side-discharge, there are no cuttings to collect and subsequently dispose of.

The integrated 24 Ah battery provides up to 2 hours mowing time before needing to be recharged with the included charging cable.

Battery-powered mowers offer eco-friendly operation with: zero emissions, reduced noise, low maintenance, cordless convenience, cost savings, improved safety, and advancements in battery technology for longer runtimes and shorter charging times.

The adjustable seat is both comfortable and closely situated to the steering wheel and pedals for support when mowing.

£1,995.00



Lawn size: up to 2,500m²
Cutting width: 76cm
Deck construction: steel
Battery: 24Ah, 72V
Battery type: lead acid
Charger: included
Height of cut: 25-106mm
Turning radius: 46cm
Weight: 188kg



TORO SW4200
Zero-turn ride-on mower.
Product # ZH-74675

£1,950.00



TORO TimeCutter ZS3200S
81cm zero turn ride on mower with a 41cm cutting width.
Product # ZH-74650

£1,495.00



LAWNFLITE LF48SPBR
Self propelled mower with 5hp Briggs & Stratton engine
Product # ZB-LF48SPBR

£175.00



LAWNFLITE CR48SP
4-in-1 self-propelled petrol lawn mower with a 19" cutting width.
Product # ZB-CR48SP

£155.00



HUSQVARNA Automower® 405X
Product # ZV-970456203

Husqvarna Automower® 405X - a reliable and high-performance model in the X-line series, suited for the smaller lawn. It mows complicated lawns up to 600m², featuring systematic passage mowing for perfectly cut narrow passages and it easily handles slopes with an incline of 40%. Carefree operation thanks to electric cutting height adjustment, TargetHeight function, frost guard and weather timer. Easily cleaned and washed off with a hose. As a member of our premium X-line range, it features Automower® Connect with GPS theft tracking and GPS-assisted navigation to keep you in control where ever you are and X-line design with LED Headlights, front bumper and special coloured wheel caps. Also equipped with FOTA (automatic firmware updates over the air).

Whats in the box?

- x1 405X Automower
- x1 Charging Station
- x1 Extra Blades 6pcs
- x1 Power Supply Unit
- x1 Low Voltage Cable (10m)

£999.00



- Anti-Theft Alarm & GPS Tracking
- Lift and Tilt Sensors
- Automower® Connect
- Weather Timer
- Systematic Passage Mowing
- Electric Height Adjustment
- GPS Assisted Navigation
- Frost Sensor
- LED Headlights
- Hose Washable

£999.00



TORO 22188TE
Aluminium deck heavy duty petrol mower.
Product # ZH-22188TE

£455.00



EGO LB6002E
1020m³/h backpack blower with kit
Product # ZE-EGLB6002E

£150.00



HAYTER Harrier 56 PRO
Petrol, auto-drive, rear-roller, 53cm cut mower.
Product # ZH-CODE56J

£495.00



VIKING LB 540
Pedestrian scarifier with 7 individual blades.
Product # ZS-62900113101

£265.00



Kubota

Save on Filters!

Kubota Filter Kits From: £99.00

PLUS

10% off all lubricants when purchasing a service kit

Offer expires 30th June 2024

All prices are subject to VAT

Parts that work. Guaranteed by Kubota.

18 MONTHS* WARRANTY

ON ALL GENUINE PARTS

When you fit Kubota approved parts you can be assured of the highest standards of quality and engineering excellence to deliver unrivalled reliability supported by a full 18-month parts and labour guarantee *when fitted by a Kubota dealer - for complete peace of mind.

Kubota Parts and Service
Reliability > for the Job Ahead

GET ON TRACK!

Prices start from £150.00

Kubota-Approved Rubber Replacement Tracks

- Full range of sizes for Kubota excavators
- Optimised tread for traction, comfort & durability
- High-grade rubber tracks for optimum track durability and strength

CONTACT YOUR KUBOTA DEALER TODAY!



18 MONTH WARRANTY*

WHICHEVER COMES FIRST

*When fitted by a Kubota dealer.

All prices are subject to VAT

Extended Warranty & Service Contracts

Only available up to 30 days after delivery



Two great ways to enjoy total peace of mind.



Up to 5 years extended, flexible warranty



Routine service and maintenance plan

EXTENDED WARRANTY

Total cover for every hour you work.



Safeguard your Kubota compact tractor or ride-on mower against unforeseen repair costs for up to 5 years.

It makes good business sense to invest in a Kubota; from leading-edge engineering to innovative technology solutions, Kubota's groundcare range benefits from a well-deserved reputation for reliability and performance. In addition to Kubota's standard 2-year warranty, you can be further protected with their flexible extended warranty scheme **KUBOTA CARE**.

Kubota Care offers complete peace of mind through extended warranty cover, based on the hours you use and is fully transferable when you come to sell.

MODEL	HOUR USAGE (or 5 years whichever comes first)
ST series	1500 – 3000
B/BX series	1500 – 3000
F90 series	1000 – 2500
ZD1211/GZD series	1000 – 2500
G series	1000 – 2500
GR series /Z122R	1000

SERVICE CONTRACTS

Planned maintenance. Predictable cost.



A maintenance plan that covers all routine service and maintenance.

KUBOTA PROTECT PLUS is the easy and flexible way to budget routine maintenance for your Kubota groundcare machine. Simply select the hours you expect to use your Kubota each year and agree a payment plan with Lister Wilder to suit your business requirements.

Let us manage your machine for complete peace of mind, with work undertaken by Kubota trained technicians using genuine parts and lubricants - all covered by a 18-month warranty to minimise downtime and maximise your productivity.

CONTACT A SERVICE REPRESENTATIVE AT YOUR BRANCH

Ashford Branch

Jack Blood
01233 619 290
Concept House
18 Henwood Industrial Estate
Hythe Road
Ashford, Kent
TN24 8DH

Bristol/Bath Branch

Ken Weaver
01454 807 850
Unit 26
Burnett Business Park
Keynsham
Bristol
BS31 2ED

Cirencester Branch

Izzy Clare
01285 708 234
Meadowlands Farm
Bibury
Cirencester
Gloucestershire
GL7 5LZ

Ockham Branch

Richard Hill
01483 286 837
South End Farm
Long Reach
Ockham, Guildford
Surrey
GU23 6PF

Reading Branch

Martin Elkes
01189 884 888
White House Farm
White House Lane
Reading
Berkshire
RG7 1HR

Salisbury Branch

Chloe Harper
01980 863 666
Stockbridge Road
Lopcombe Corner
Salisbury
Wiltshire
SP5 1BW

For Earth, For Life

UNDERCARRIAGE PARTS PRICING



Kubota



SPROCKET

RD80914440/KX080-4a2

~~£308.30~~

£124.03

Saving £184.27



IDLER

RD15821302/KX042-4

~~£846.74~~

£377.88

Saving £468.86



LINK ASSEMBLY

RC44122250/KX030-4

~~£271.05~~

£90.40

Saving £180.65



TRACK ROLLER

RD81921702/KX080-4a

~~£302.92~~

£148.03

Saving £154.89



CARRIER ROLLER

RD82921900/KX080-4

~~£263.94~~

£103.82

Saving £160.12

Genuine parts at a genuinely low price.

*Terms and conditions apply. All prices exclude VAT, prices correct as from time of printing, E&EO, contact your local branch for further details.

WORKSHOP TOOLS from Kubota

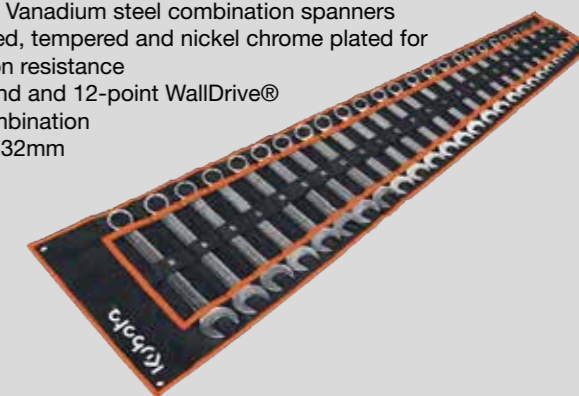


8 Drawer Rollcab with Ball-Bearing Slides

- Heavy gauge steel with double wall construction
- Ball-bearing drawer slides provide superior performance and carry heavier loads
- Each drawer fitted with catch, side mounted cylinder lock with two keys.
- Rust and solvent resistant powder coated finish
- Anti-shock protection on all four corners
- Rollcabs feature two Ø125mm swivel castors with large toe locks and two fixed wheels.
- Tough composite top for fitting and securing top chest or workstation
- Overall Size (WxDxH): 765x465x960mm

25pc Combination Spanner Set

- Chrome Vanadium steel combination spanners
- Hardened, tempered and nickel chrome plated for corrosion resistance
- Open-end and 12-point WallDrive® ring combination
- Sizes 6-32mm



3pc High Leverage Pliers Set

- Hardened and tempered drop-forged Chrome Vanadium steel
- Serrated jaws and precision ground cutting edges, induction-hardened 55-65 HRC for cutting hard and soft wires
- Comfort grip handles and black oxide finish for corrosion protection
- Contents: 200mm long nose pliers, 175mm combination pliers, 160mm side cutters



24pc 1/2" Sq Drive Socket Set

- Heat treated Chrome Vanadium Steel sockets and accessories.
- Standard sockets from 8 to 32mm.
- 1/2" Sq Drive 90-Tooth Gear-to-Gear Ratchet Wrench with Quick Release, Extension Bars; 75, 125, 250mm, Universal Joint, 3/8" Sq Drive Female - 1/2" Sq Drive Male Adaptor.



8pc GripMAX® Screwdriver Set

- High quality Chrome Vanadium satin finished shafts with shot blasted and magnetized tips.
- Ergonomic polypropylene and TPV rubber soft grip handles
- Contents: slotted - 3 x 75, 4 x 100, 6 x 150, 8 x 200mm; Phillips: #1 x 75, #2 x 100mm; Pozi: #1 x 75, #2 x 100mm



*Terms and conditions apply. All prices exclude VAT, prices correct as from time of printing, E&EO, contact your local branch for further details.

Visit our showroom for more great offers today

Ashford | Bristol/Bath | Cirencester | Guildford | Reading | Salisbury

NEW GROUND CARE MACHINERY

All Available Now



2022 AgriMetal GR-400
High specification greens roller
£17,995
Ref 20112183/20112182



2022 Kubota B1241
24hp diesel compact tractor
£10,995
Ref 20110819



2022 Kubota B2231
23hp diesel compact tractor
£14,600
Ref 20114185



2023 Kubota B1181
18hp diesel compact tractor
£10,695
Ref 20114710



2023 Timberwolf TW 230HB Petrol 6"
6" 37hp petrol chipper
£16,995
Ref 20107293/20112658/20112661/63/64/65/
20107293/8/20107291



2022 Timberwolf TW 230VTR Petrol 6"
6" 37hp petrol chipper
from £25,995
Ref 20107314/6/7/20107297/ 20115033/4



2023 Timberwolf TW 230VTR Diesel 6"
6" 25hp diesel chipper
£29,995
Ref 20112059



2021 Redexim DS800 Rink
0.8m³ hydraulic top dresser
£10,500
Ref 20110199



2022 Redexim Verti-Quake 2516
1.6m rear mounted decompactor
£9,995
Ref 20106400



2022 Redexim Speed-brush
Trailed electric fine turf brush
£4,750
Ref 20110637



2022 Redexim Turf Tidy 3000
1.8m flail collector
£20,995
Ref 20113238



2022 Redexim Overseeder 3D 1275
1.5m disc seeder
£12,595
Ref 20113241



2023 Redexim Overseeder 3D 1575
1.5m disc seeder
£13,995
Ref 20113243



2022 Redexim Overseeder 3D 1575
1.5m disc seeder
£12,495
Ref 20106406



2021 Redexim Blecavator 145
PTO driven one-pass ground preparation tool
£10,475
Ref 20106392



2022 Trimax ProCut S4 178
1.7m trailed rotary mower
From £6,495
Ref 20114085/0106710



2022 Trimax Ezeemow FX 155
Rear mounted 1.55m flail
£4,450
Ref 20114069/70



2022 Grillo FD 2200T5
47hp diesel ride-on collector mower
£36,995
Ref 20110501/4



2022 Dennis G860
34" pedestrian cassette cylinder mower
£5,995
Ref 20111612



2021 Dennis Simplex 610
24" pedestrian cassette cylinder mower
£3,600
Ref 70103339



2023 Stella URS
Tracked remote control mower
£31,750
Ref 20115093



2023 Bomford Turbo Elite 130
1.3m rear mounted rotary mower
£2,645
Ref 30114536/7



2023 Bomford Twin-Blade TB145
1.45m rear mounted rotary mower
£1,195
Ref 30114544/5



Yamaha PW50
Fully automatic 50cc 2 stroke motorbike
£1,895
Ref 30114574/5/6



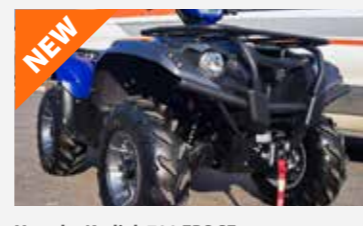
Yamaha YFM90R
88cc, 2WD quadbike, automatic CVT trans
£2,950
Ref 30114571



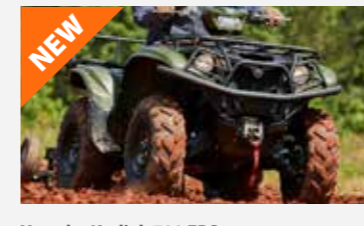
Yamaha Viking YXM700
EPS power steering, CVT
POA
Ref 30111892



2022 Yamaha UMX AC
Electric utility vehicle, powerful 5.0 kW electric motor, 29-litre front storage box
£11,995
Ref 20113003



Yamaha Kodiak 700 EPS SE
Mk11 686cc SOHC engine, smooth-running Ultramatic[®] CVT transmission and 2WD/4WD
£9,270
Ref 00000000



Yamaha Kodiak 700 EPS
Power steering, smooth-running Ultramatic[®] CVT transmission
£9,590
Ref 80014452



D W Tomlin 1.25T Dropside Trailer. FOC delivery within 1 week
£2,495
Ref 20115863/20115864/20116006



D W Tomlin 1.25T Smallholder Solid Sides Trailer. FOC delivery within 1 week
£2,150
Ref 00000000



D W Tomlin 2.00T Dropside Trailer. FOC delivery within 1 week
£3,250
Ref 00000000



D W Tomlin 2.00T Smallholder Solid Sides Trailer. FOC delivery within 1 week
£2,750
Ref 20113249/20115865



D W Tomlin 3.00T Solid Side Trailer. FOC delivery within 1 week
£3,850
Ref 20113250



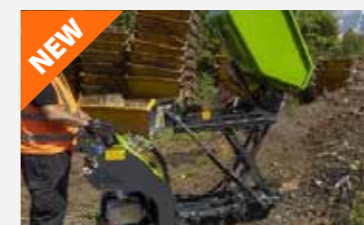
2023 Brian James Trailers General Plant Trailer
£2,750
Ref 50116060



2023 Brian James Trailers Tipper Trailer
£6,995
Ref 70117122



Peruzzo TB100C
10cm diameter drum chipper
£5,350
Ref 70103665



2023 Merlo Cingo M700TD
High tip handler
£9,300
Ref 20116420/ 20116421



Tracmaster BCS 710 (C8)
8.4hp petrol rotavator
£2,575
Ref 20116051



2023 Slanetrac HT1000
Mini dumper
£10,850
Ref 70114975

EX-DEMO, EX-HIRE + USED GROUND CARE MACHINERY

Please note that our ex-demo and ex-hire machines will remain in service until sold and a replacement is available, this might delay delivery from time of order for 10-14 days. Whilst every effort is made to ensure that the hours shown are correct there may be a small variation upon delivery.



USED
2023 Kubota M5112
115hp diesel tractor
£47,250
Ref 70117641



EX-HIRE
2023 Kubota M5092
95hp diesel tractor
£46,250
Ref 20115051



EX-HIRE
2022 Kubota M4073
73hp diesel compact tractor
From £35,700
Ref 20104493



EX-HIRE
2022 Kubota L2622
62hp diesel compact tractor
£32,250
Ref 20109614/5



EX-HIRE
2023 Kubota L2522
52hp diesel compact tractor
£29,995
Ref 20109005/20109007



EX-HIRE
2023 Kubota L2522
52hp diesel compact tractor
£29,995
Ref 20109008



EX-HIRE
2022 Kubota L2522
52hp diesel compact tractor
From £26,500
Ref 20109617/20104034/20101971



EX-HIRE
2021/2 Kubota L2452
45hp diesel compact tractor
From £21,750
Ref 20103448/20101965



EX-DEMO
Kubota LX401
40hp diesel compact tractor
£27,500
Ref 20120167



EX-HIRE
SOLD
Contact us for similar available machines
2021/3 Kubota RTV-X1110
Utility vehicle
POA
Ref 20099524



EX-DEMO
2022 Kubota G-261RD
26hp rear discharge diesel ride-on mower
£10,495
Ref 20110210



EX-HIRE
2023 Kubota G231
Rear discharge diesel ride-on mower
£12,750
Ref 20107154



EX-HIRE
2022 Kubota F391
Diesel ride-on mower
£20,500
Ref 20110245



EX-HIRE
2018 Kubota F3890
Diesel ride-on mower
£13,500
Ref 20082175



EX-HIRE
2022 Kubota ZD1211
Diesel ride-on mower
£13,995
Ref 20109631



EX-DEMO
2023 Baroness LM180E
Ride on cylinder mower 1.8m Honda engine
£12,995
Ref 20112680



EX-DEMO
2022/3 Baroness LM101
Floating head greens mower
£7,995
Ref 20112843/4



EX-DEMO
2022 Baroness LM56
Fixed head green mower
£6,750
Ref 20109106



EX-HIRE
2023 Baroness FS900
Ride on sweeper
£23,995
Ref 20114041



EX-DEMO
2023 Timberwolf TW 230VTR Petrol 6"
6" 37hp petrol chopper
£26,250
Ref 20111590



USED
2020 Timberwolf TW230HB Petrol 6"
6" 37hp petrol chopper
£11,250
Ref 30118582



EX-HIRE
2022 Timberwolf TW 230HB Petrol 6"
6" 37hp petrol chopper
£14,995
Ref 20107286



EX-HIRE
2020 Redexim Rink DS3100 Evo
Top dresser
£14,995
Ref 20096707



Shop Soiled
2021 Trimax Pegasus S4 610
6.1m trailed rotary mower
£29,850
Ref 20106708



EX-DEMO
2022 Trimax Ezeemow 155
Rear mounted 1.52m flail
£4,400
Ref 20110796



EX-DEMO
2022 Trimax FlailDek FX 155
Front mounted 1.55m flail
£5,795
Ref 20114080



EX-HIRE
2022 Redexim Verti-Drain 7416
Aerator
From £19,500
Ref 20106390/20104687



EX-HIRE
Redexim Verti-Quake 2516
Aerator
POA
Ref 90081562



EX-HIRE
2020 Redexim OxyShot
Aerator
£5,250
Ref 20093866



EX-DEMO
2021 Redexim Top-Brush 6000
Brush
£12,495
Ref 20102919



EX-HIRE
2021 Redexim Overseeder 3D 1575
Seeder
From £8,995
Ref 20106395/20100778/20106396/20106405



EX-HIRE
2021/2 Redexim 1200 SP
Core collector
From £10,950
Ref 20101758/20106403

EX-DEMO, EX-HIRE + USED GROUND CARE MACHINERY



Please note that our ex-demo and ex-hire machines will remain in service until sold and a replacement is available, this might delay delivery from time of order for 10-14 days. Whilst every effort is made to ensure that the hours shown are correct there may be a small variation upon delivery.



EX-HIRE
2023 Redexim Multi-Pack
Seeder
£7,995
Ref 20114670



EX-HIRE
2021 Redexim Verti-Quake 2516
1.6m rear mounted decompactor
£8,100
Ref 20106408



EX-DEMO
2023 SALSICO HP11-III
Petrol triple roller greens roller
£24,750
Ref 20114730



EX-DEMO
2021 SALSICO EGR
Twin roller lithium electric roller
£17,750
Ref 20103368



EX-HIRE
2020 Blecavator BV145
Rotavator
£5,995
Ref 30102203



EX-HIRE
2020 BLEC Multi-Pack
Rotavator
£6,250
Ref 20095553



EX-HIRE
2021 Bomford Robin 4.3m
Hedgecutter
£9,750
Ref 20101594



EX-HIRE
2022 Bomford Kestrel Evo Power Plus 5.7 P
Hedgecutter
£17,995
Ref 00000000



EX-HIRE
2020 Imants RootPruner
Aerator
£5,995
Ref 20099664



EX-HIRE
2023 Ryetec P1600CHE
Mower
£11,250
Ref 20116956



EX-HIRE
2020 SCAG Super Flail 48
Flail mower
£5,250
Ref 20093860



EX-HIRE
2021 SCAG Super Flail 48
Flail mower
£5,995
Ref 20102110



EX-HIRE
2020 Sisis Rotorake HD600
Renovator
£5,750
Ref 20094300



EX-HIRE
2021 Yamaha UMX
Utility vehicle
£8,750
Ref 20103399



EX-HIRE
2018 Trilo S4
High volume PTO vacuum collector
£18,950
Ref 20081709/20084524



EX-HIRE
2023 Merlo M12.3 EVO 400
21hp diesel tracked telescopic handler
£18,995
Ref 80550253



EX-HIRE
Kersten UBS Hydro 14
Pedestrian sweeping brush
£5,500
Ref 20086130



EX-HIRE
Toro 18hp Traction Unit
Pedestrian rotary mower
£4,995
Ref 20089743



EX-HIRE
Ryetec C1600
Mower
£12,500
Ref 00000000



EX-DEMO
2020 Roberine R3
30kW hydrostatic triple cylinder mower
£25,000
Ref 20093219

YAMAHA
Revs Your Heart

Get up to
£1750 trade-in bonus
on ATVs and ROVs*

*T&Cs apply

View more stock at

listerwilder-machinery.co.uk



Groundcare Area Sales Managers

Cirencester Branch

David Patrick
07423 580551
GOLF

Ian Davies
07831 127258

Martin Macqueen
07388 995723

Mark Zealander
07484 090251

Bristol/Bath Branch

Shayne Curtis
07766 016725

Reading Branch

Guildford Branch

Oliver Gerrish
07766 725019

Ashford Branch

Ian Davies
07831 127258

David Gray
07553 891199
GOLF

Graham Merritt
07778 362116
NON GOLF

David Gray
07553 891199
GOLF

Mark Carter
07899 062148

Philip Turner
07979 653066

Andy Taylor
07979 653062

Stuart Venn Dunn
07879 812044
Key Accounts

Tim Vines
07879 812079
Head of Groundcare Sales

For more information call our area sales managers above or visit our website at www.listerwilder.co.uk

We also hire machinery



Call our hire hotlines for your area



Matt Hobbs

South West
03301 659 599



Nick Alder & Kelly Breadmore

South East & Central
03330 069 545

LISTER WILDER